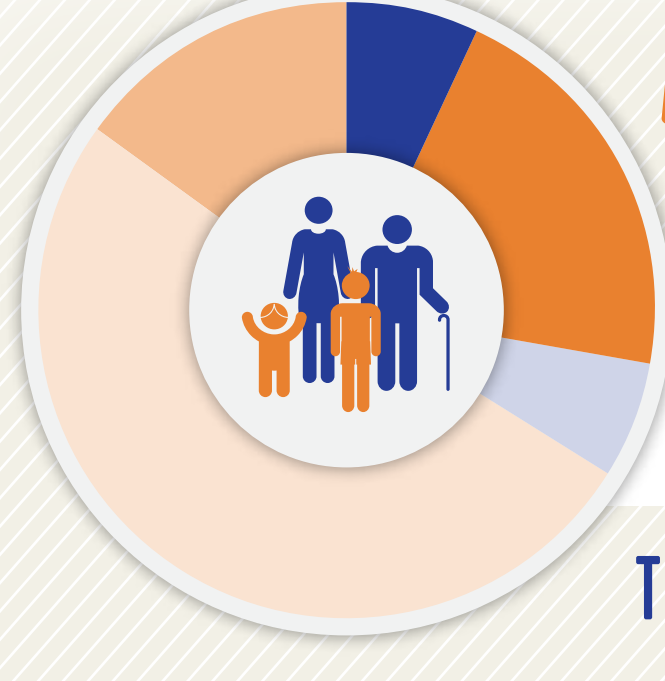




## EDUCATION & COMMUNITY PROFILE

### SPALDING COUNTY



#### POPULATION BY AGE<sup>1</sup>

2013-2014

- 7% Under Age 5
- 7% Age 20-24
- 14% Age 65 & Above
- 20% Age 5-19
- 52% Age 25-64

TOTAL POPULATION: 64,011

### VULNERABLE POPULATIONS<sup>1-8</sup>



CHILDREN IN POVERTY UNDER 18 - 2013  
31%



TEENS 16-19 NOT WORKING OR NOT IN SCHOOL - 2013  
17%



TEEN PREGNANCIES PER THOUSAND - 2012  
34



COMMUNITY JUVENILE JUSTICE CASES - 2015  
34



FOSTER YOUTH - 2014  
79



HOMELESS STUDENTS 2013 - 2014



MIGRANT STUDENTS 2013 - 2014

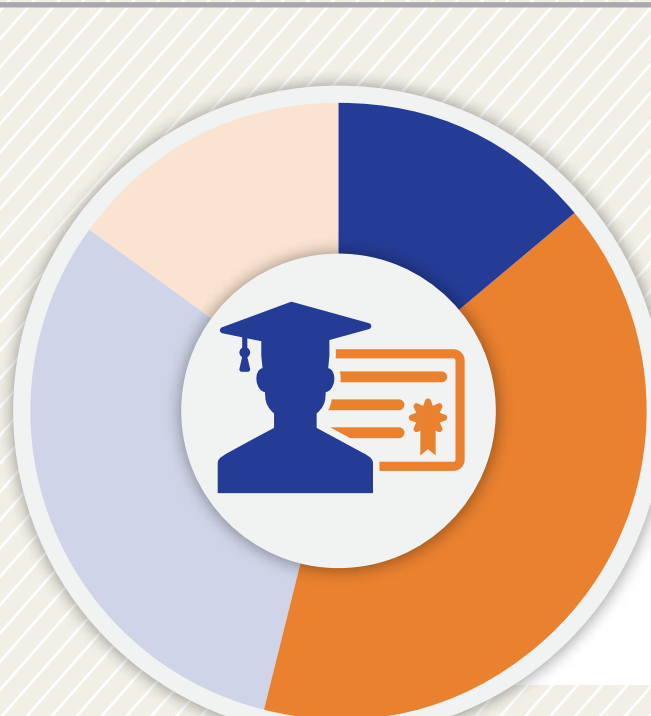
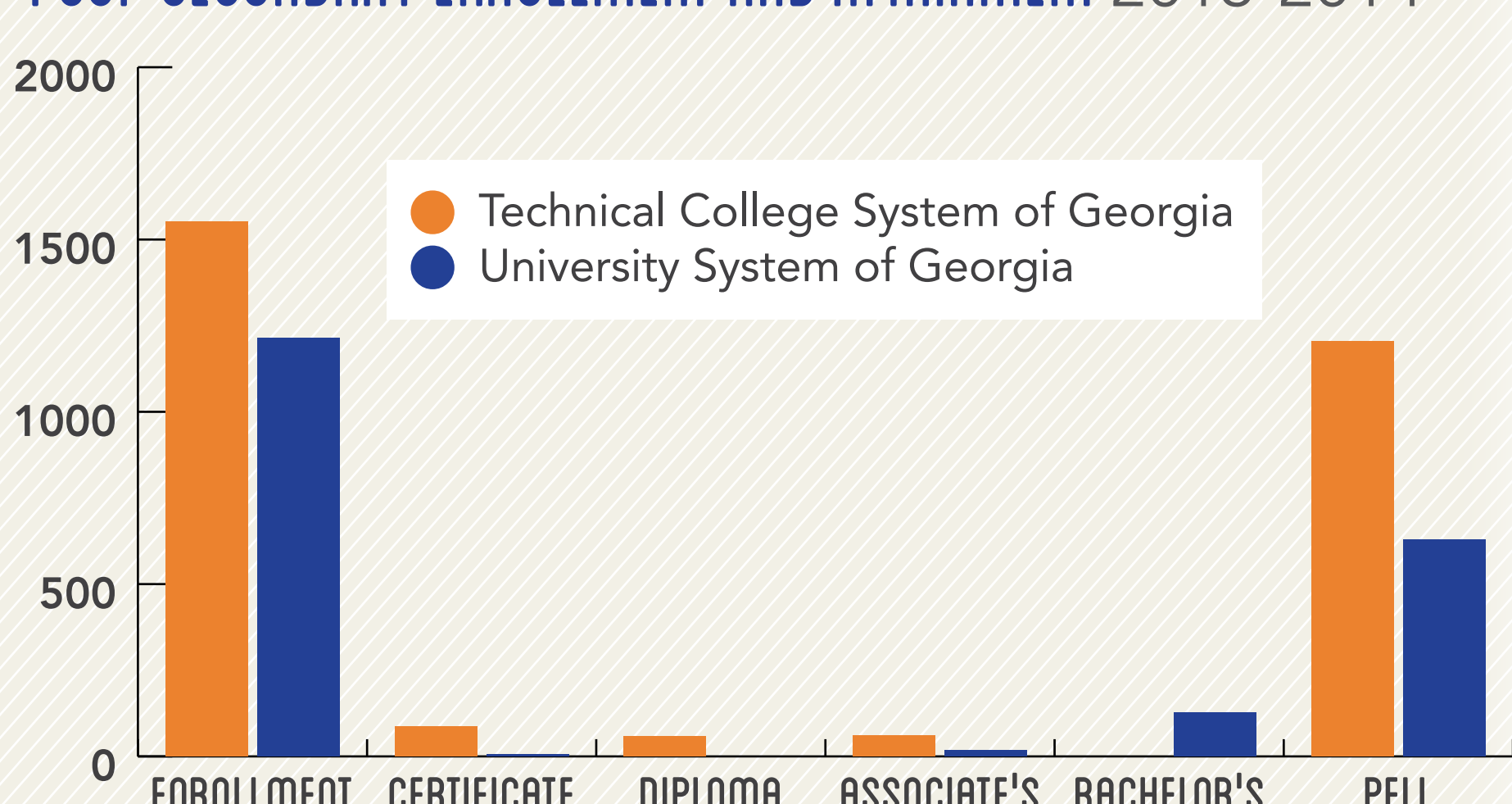


GED RECIPIENTS 2013 - 2014  
121



REFUGEE ARRIVALS - 2014  
0

### POST-SECONDARY ENROLLMENT AND ATTAINMENT 2013-2014<sup>9</sup>



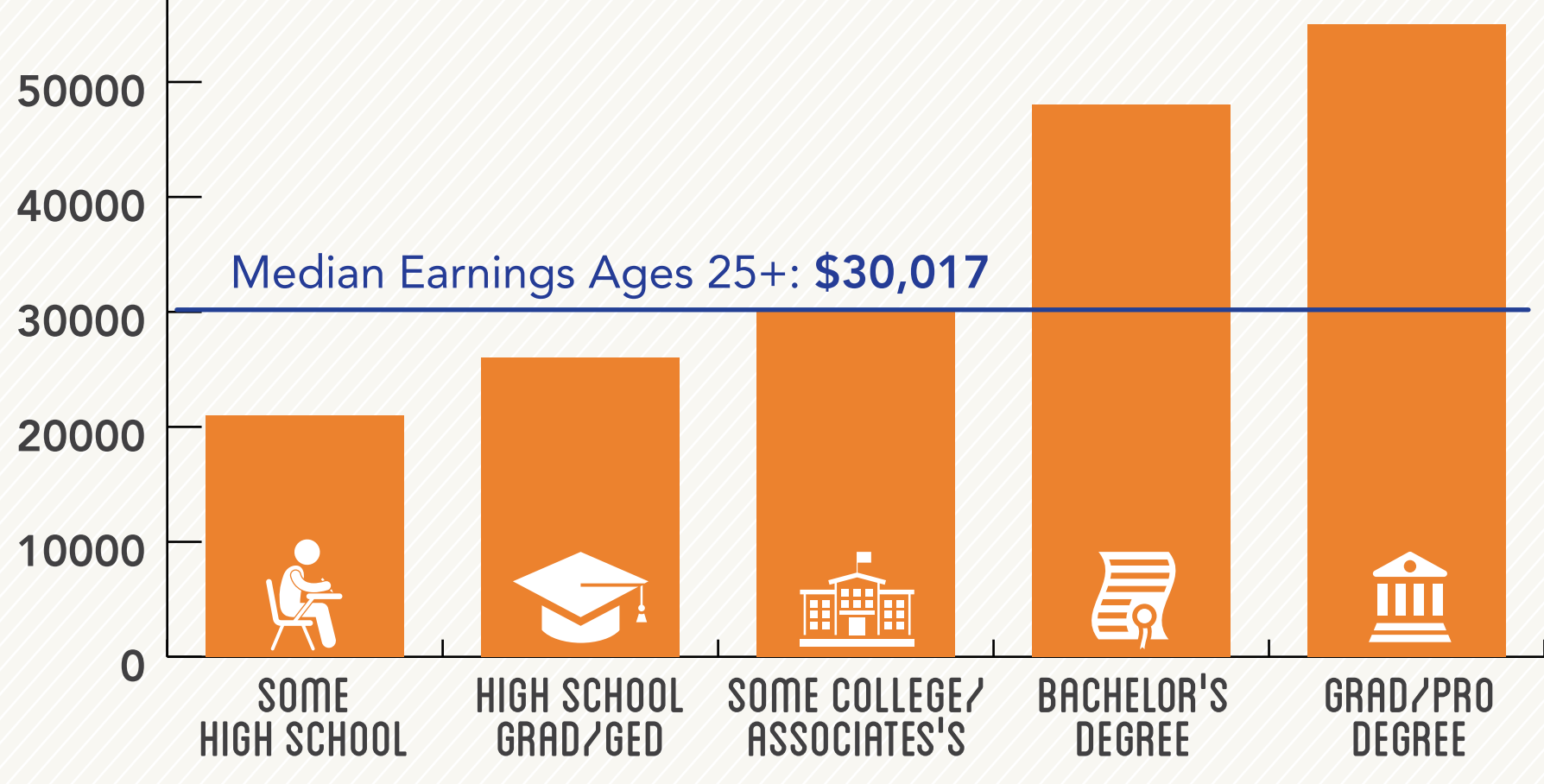
#### DEGREE ATTAINMENT<sup>1</sup>

Among Adults, 25-64, 2013-14

- 20% Some High School
- 36% High School Grad/GED
- 29% Some College/Associate's
- 15% Bachelor's Degree +

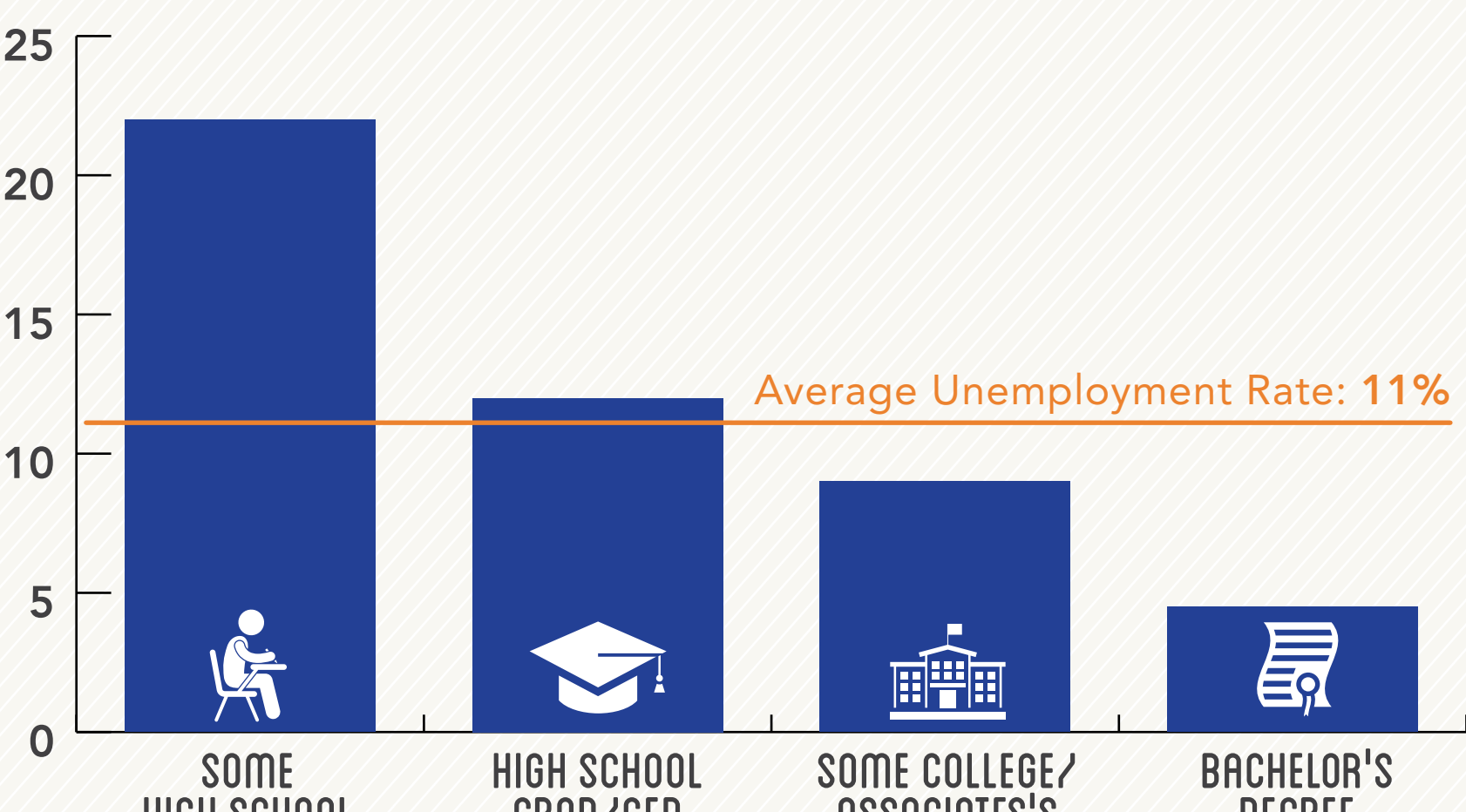
### MEDIAN EARNINGS BY DEGREE ATTAINMENT<sup>1</sup>

Among Adults Ages 25-64, 2009-13



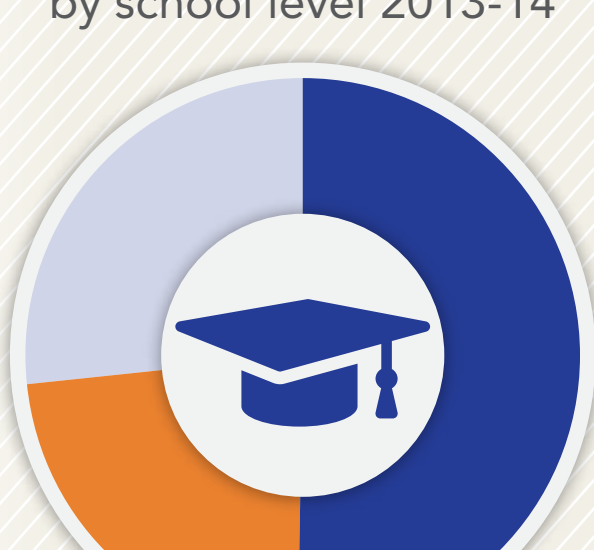
### UNEMPLOYMENT BY DEGREE ATTAINMENT<sup>1</sup>

Among Adults Ages 25-64, 2009-13



### STUDENTS ENROLLED<sup>6</sup>

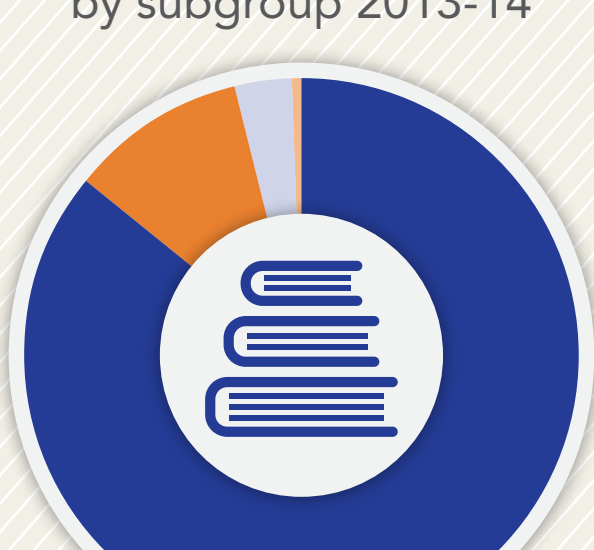
by school level 2013-14



- Elementary (PK-5) 5,106
- Middle (6-8) 2,351
- High School 2,693
- Total: 10,150

### STUDENTS ENROLLED<sup>6</sup>

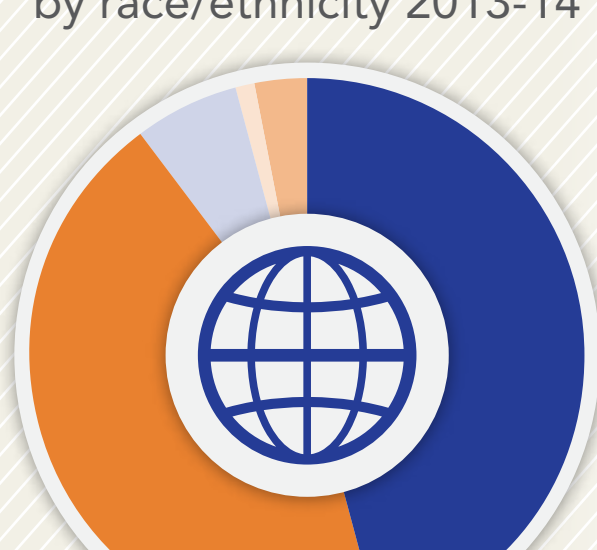
by subgroup 2013-14



- Economically Disadvantaged 7,714
- Students with Disabilities 934
- English Learners 305
- Migrant 0
- Homeless 27

### STUDENTS ENROLLED<sup>6</sup>

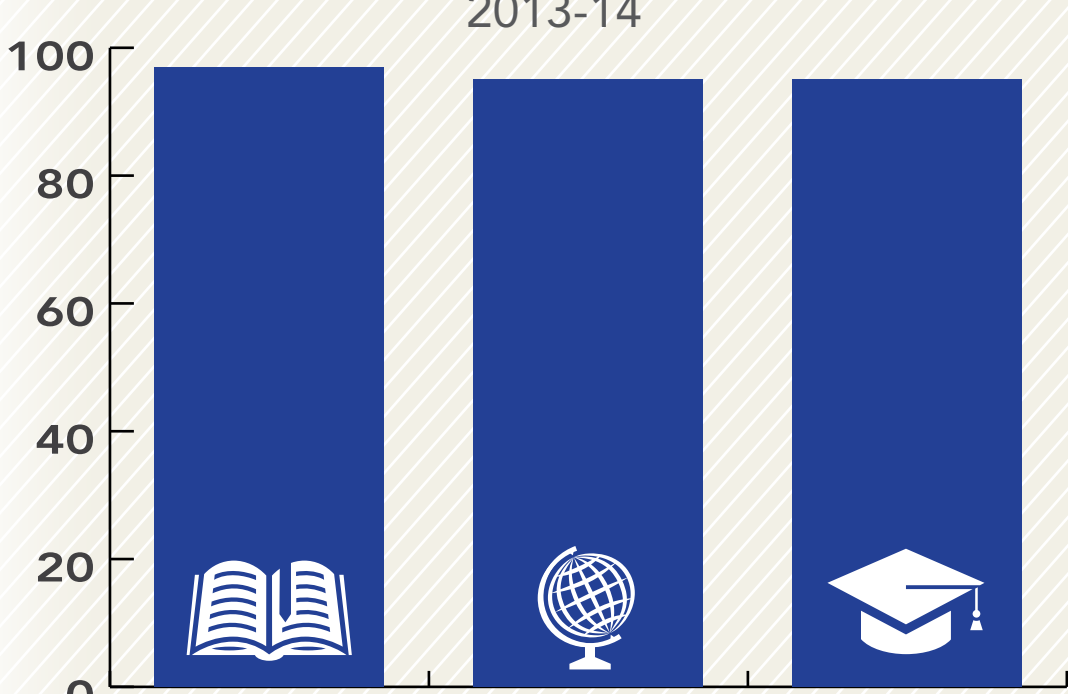
by race/ethnicity 2013-14



- White 4,669
- Black 4,466
- Hispanic 609
- Asian 102
- Multi-Racial 305

### PERCENTAGE OF SCHOOL DAYS ATTENDED<sup>11</sup>

2013-14



### POST-SECONDARY INDICATORS<sup>6</sup>

72% of high school grads enrolled in a U.S. institution within 16 months of high school graduation (2012)

55% of high school grads enrolled in Georgia post-secondary institution with one year of credit within two years of enrollment (2010)

### POST-SECONDARY READINESS<sup>6, 11, 12</sup>

- 59% Enrolled in accelerated courses (2014)
- 63% Academically prepared for post-secondary (2014)
- NA Completed FAFSA (2013-2014)
- 39% Eligible for HOPE scholarship (2013-2014)

#### SAT AVERAGE SCORES (2012-2013)

Reading 462

Math 459

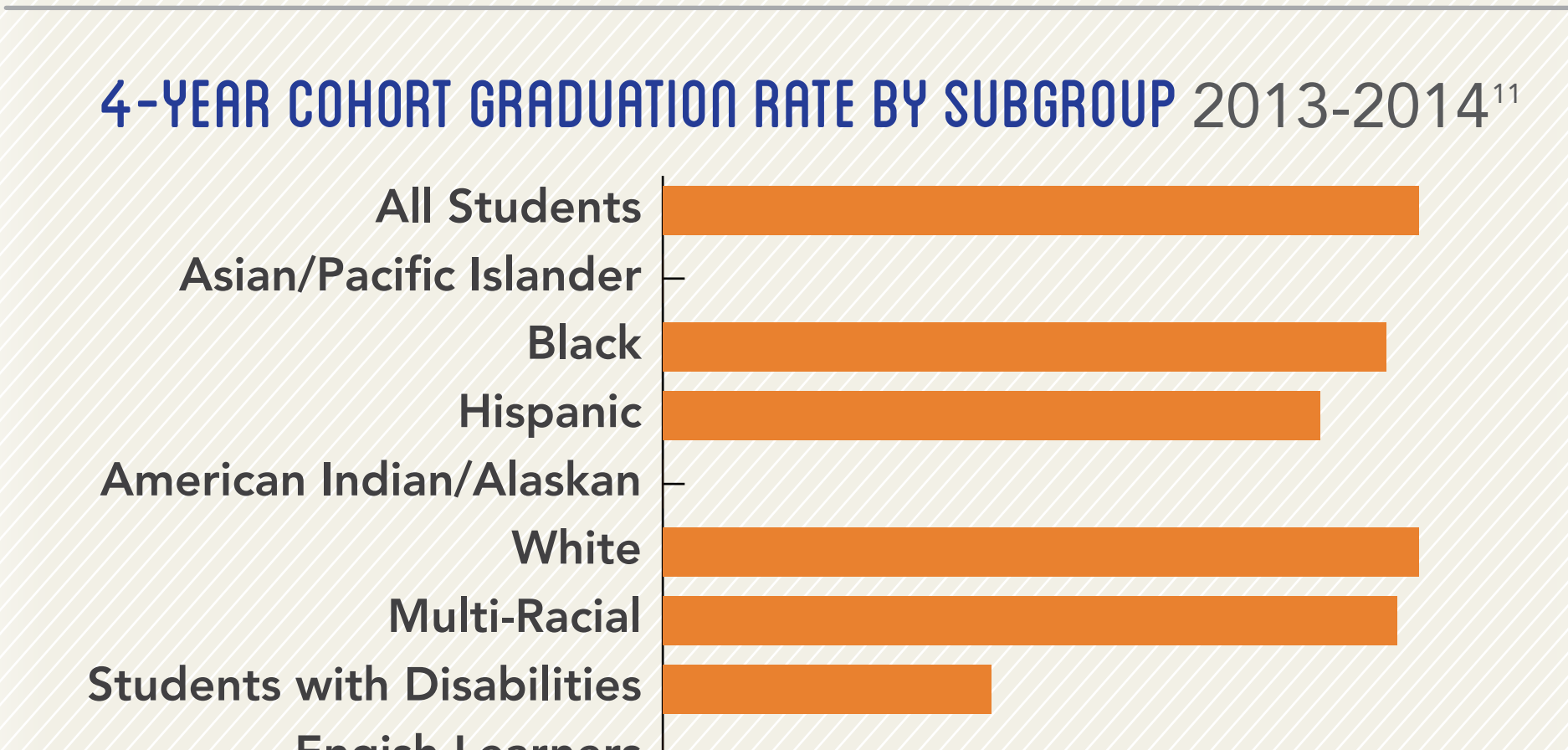
#### ACT AVERAGE SCORES (2013-2014)

English 17.8

Math 18.5

Science 18.8

### 4-YEAR COHORT GRADUATION RATE BY SUBGROUP 2013-2014<sup>11</sup>



Sources: <sup>1</sup>American Community Survey 5-year estimates, 2009-2013; <sup>2</sup>Georgia Family Connection Partnership KIDS COUNT, 2012; <sup>3</sup>Georgia Department of Juvenile Justice, 2015; <sup>4</sup>State Child Welfare System of Georgia, 2014; <sup>5</sup>Georgia Department of Education, 2013-2014; <sup>6</sup>Governor's Office of Student Achievement Georgia State Report Card, 2013-2014; <sup>7</sup>Office of Adult Education GED Testing Program, 2013-2014; <sup>8</sup>Georgia Coalition of Refugee Stakeholders, 2013-2014; <sup>9</sup>Technical College System of Georgia, 2013-2014; <sup>10</sup>University System of Georgia, 2013-2014; <sup>11</sup>Georgia Department of Education - College and Career Ready Performance Index, 2013-2014; <sup>12</sup>Georgia Student Finance Commission, 2013-2014