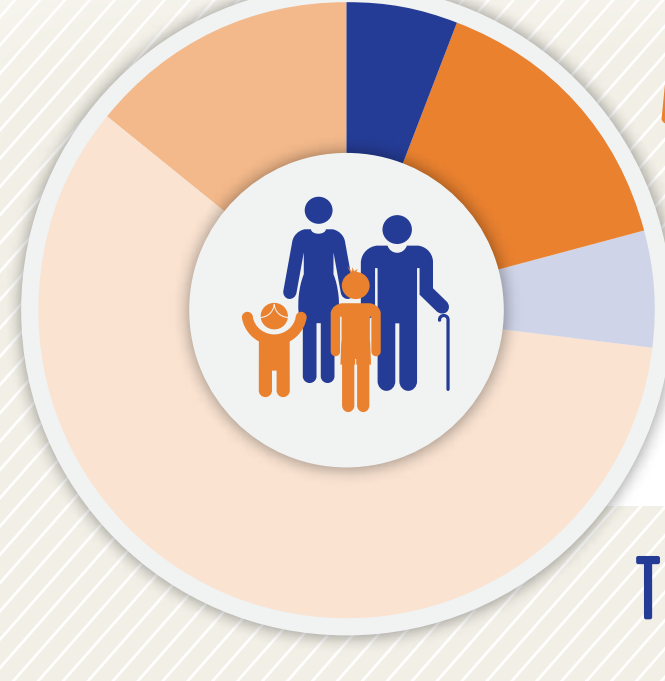




EDUCATION & COMMUNITY PROFILE

PULASKI COUNTY



POPULATION BY AGE¹

2013-2014

- 6% Under Age 5
- 6% Age 20-24
- 14% Age 65 & Above
- 15% Age 5-19
- 59% Age 25-64

TOTAL POPULATION: 11,775

VULNERABLE POPULATIONS¹⁻⁸



CHILDREN IN POVERTY UNDER 18 - 2013
23%



TEENS 16-19 NOT WORKING OR NOT IN SCHOOL - 2013
8%



TEEN PREGNANCIES PER THOUSAND - 2012
<5



COMMUNITY JUVENILE JUSTICE CASES - 2015
22



FOSTER YOUTH - 2014
10



HOMELESS STUDENTS 2013 - 2014



MIGRANT STUDENTS 2013 - 2014

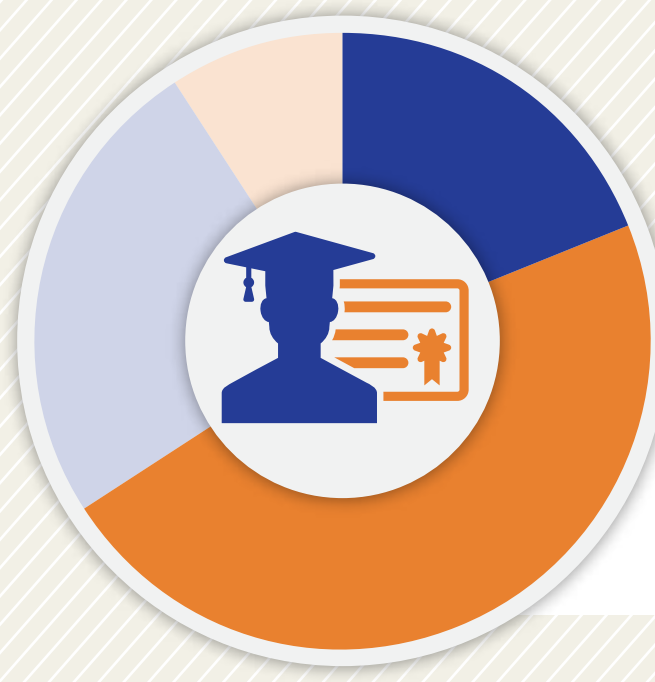
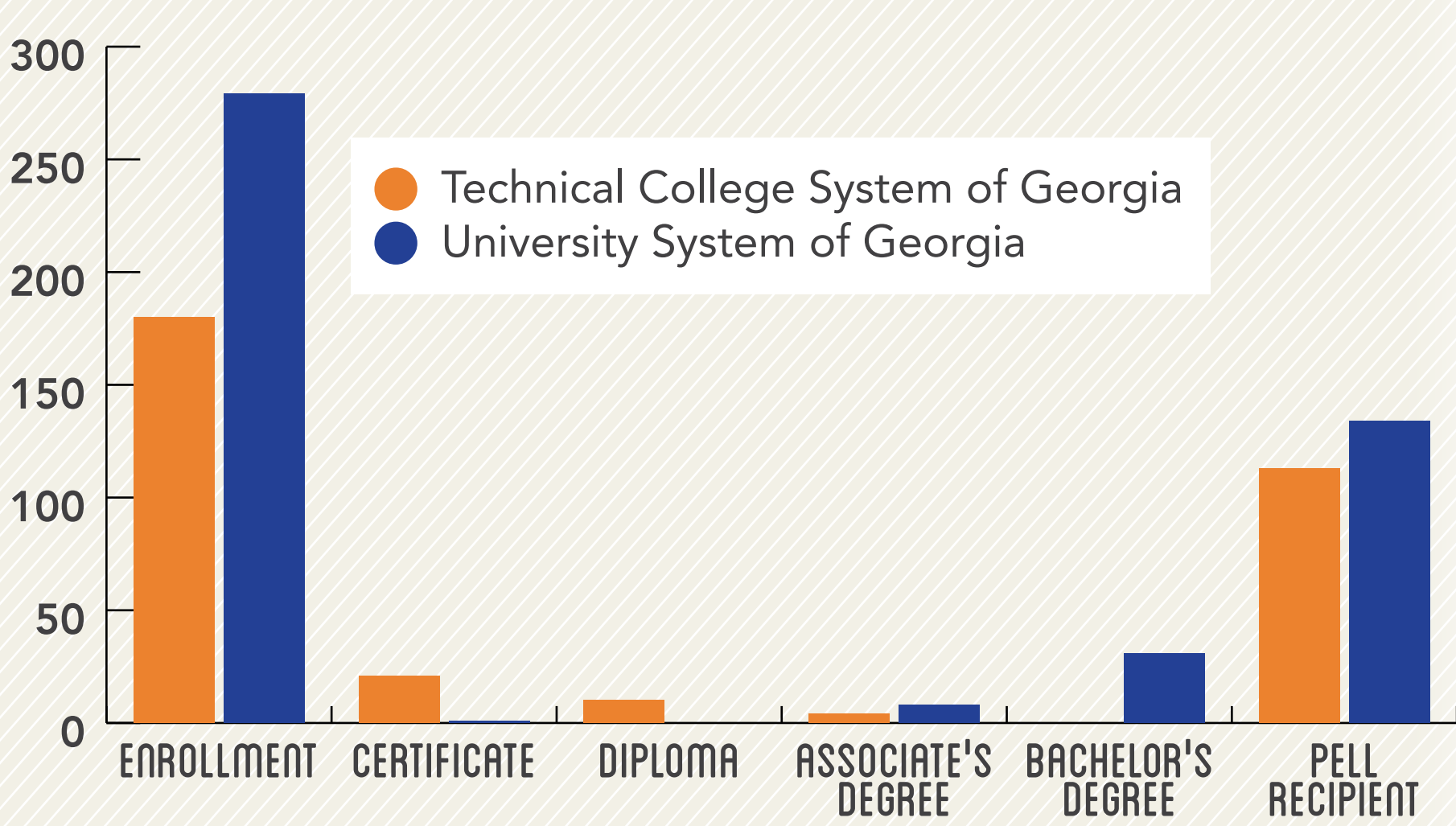


GED RECIPIENTS 2013 - 2014
23



REFUGEE ARRIVALS - 2014
0

POST-SECONDARY ENROLLMENT AND ATTAINMENT 2013-2014⁹



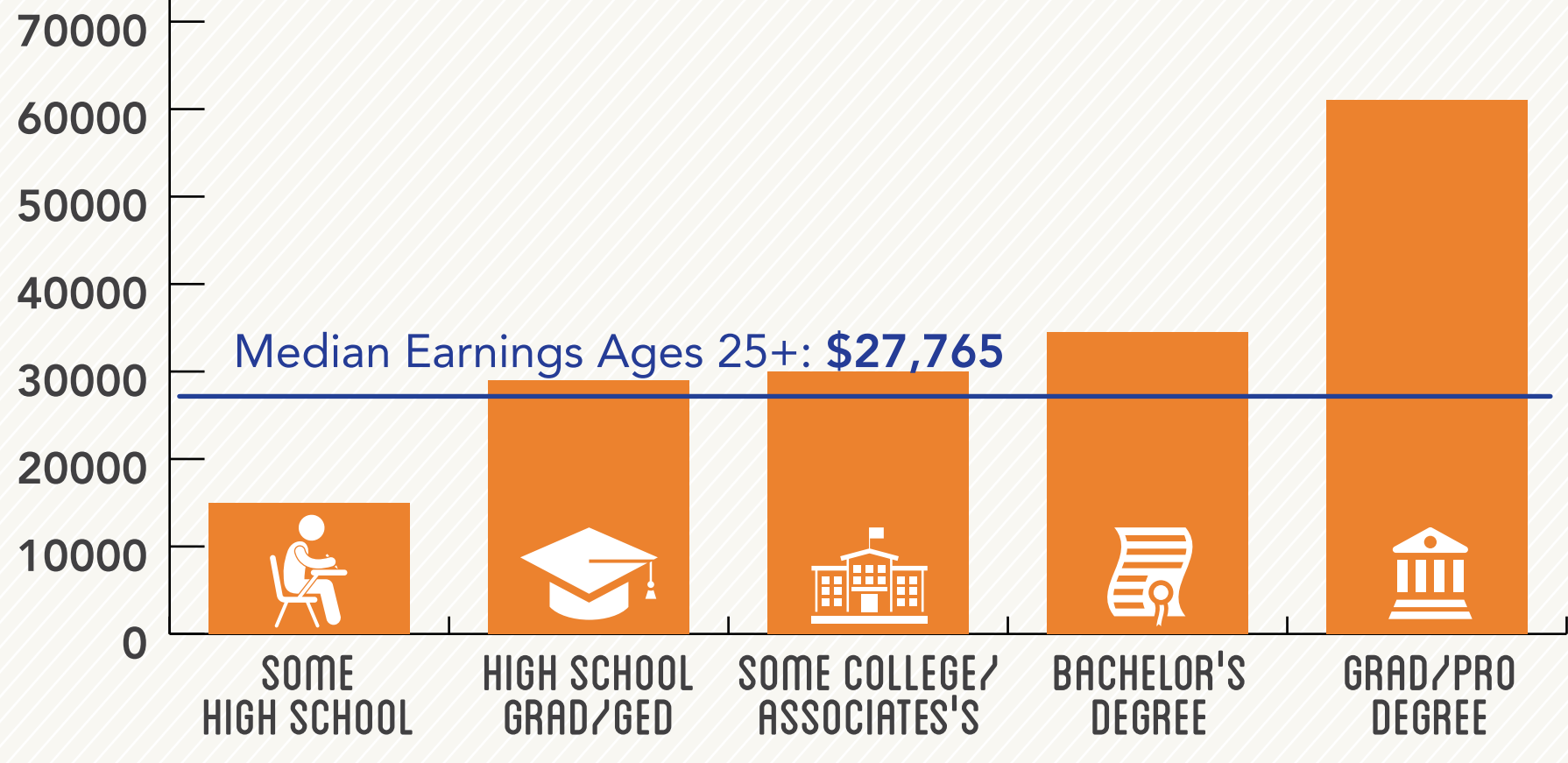
DEGREE ATTAINMENT¹

Among Adults, 25-64, 2013-14

- 19% Some High School
- 47% High School Grad/GED
- 25% Some College/Associate's
- 9% Bachelor's Degree +

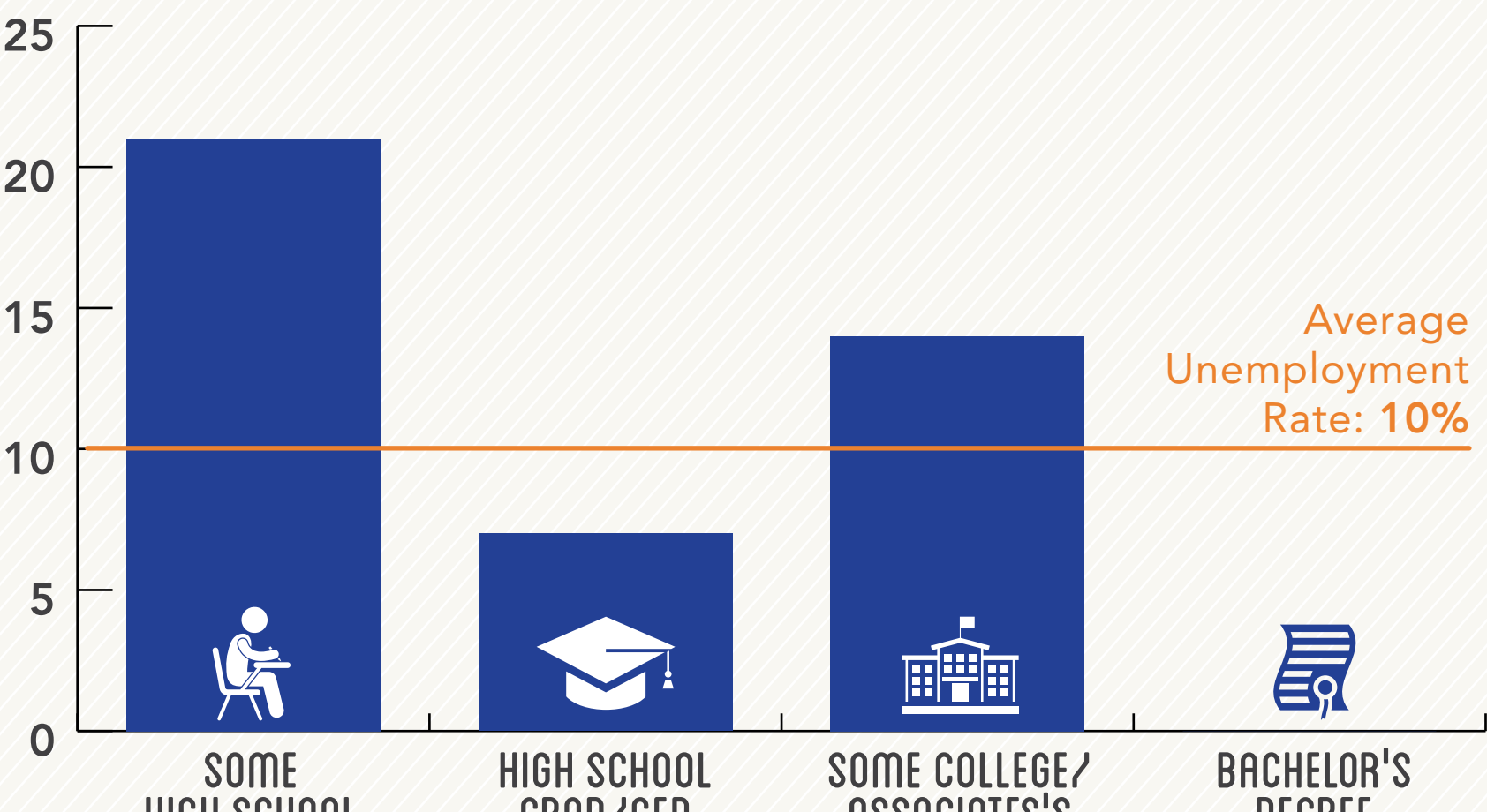
MEDIAN EARNINGS BY DEGREE ATTAINMENT¹

Among Adults Ages 25-64, 2009-13



UNEMPLOYMENT BY DEGREE ATTAINMENT¹

Among Adults Ages 25-64, 2009-13



STUDENTS ENROLLED⁶

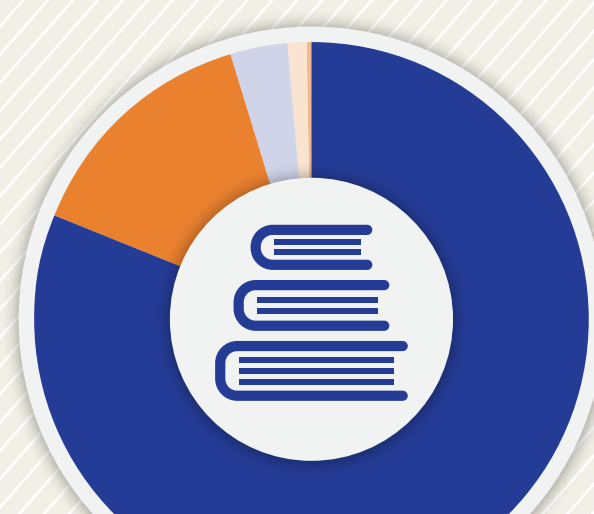
by school level 2013-14



- Elementary (PK-5) 607
- Middle (6-8) 313
- High School 394
- Total: 1,314

STUDENTS ENROLLED⁶

by subgroup 2013-14



- Economically Disadvantaged 946
- Students with Disabilities 163
- English Learners 39
- Migrant 13
- Homeless 2

STUDENTS ENROLLED⁶

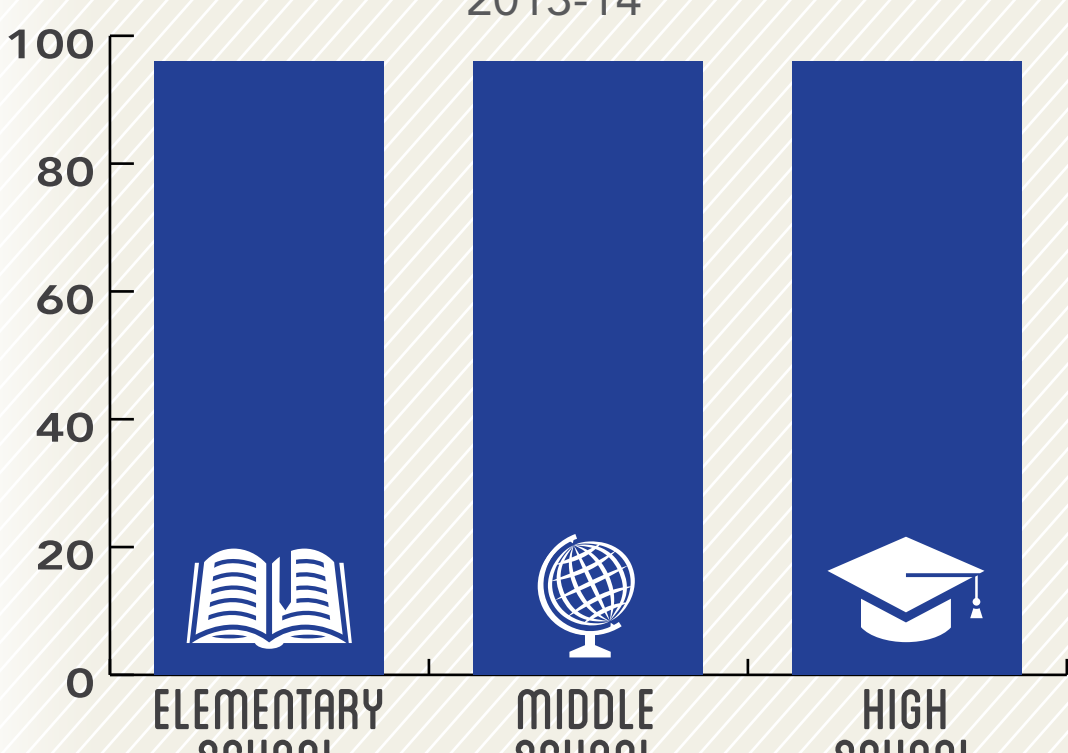
by race/ethnicity 2013-14



- White 657
- Black 512
- Hispanic 92
- Asian 13
- Multi-Racial 26

PERCENTAGE OF SCHOOL DAYS ATTENDED¹¹

2013-14



POST-SECONDARY INDICATORS⁶

75% of high school grads enrolled in a U.S. institution within 16 months of high school graduation (2012)

41% of high school grads enrolled in Georgia post-secondary institution with one year of credit within two years of enrollment (2010)

POST-SECONDARY READINESS^{6, 11, 12}

- 58% Enrolled in accelerated courses (2014)
- 76% Academically prepared for post-secondary (2014)
- 75% Completed FAFSA (2013-2014)
- 46% Eligible for HOPE scholarship (2013-2014)

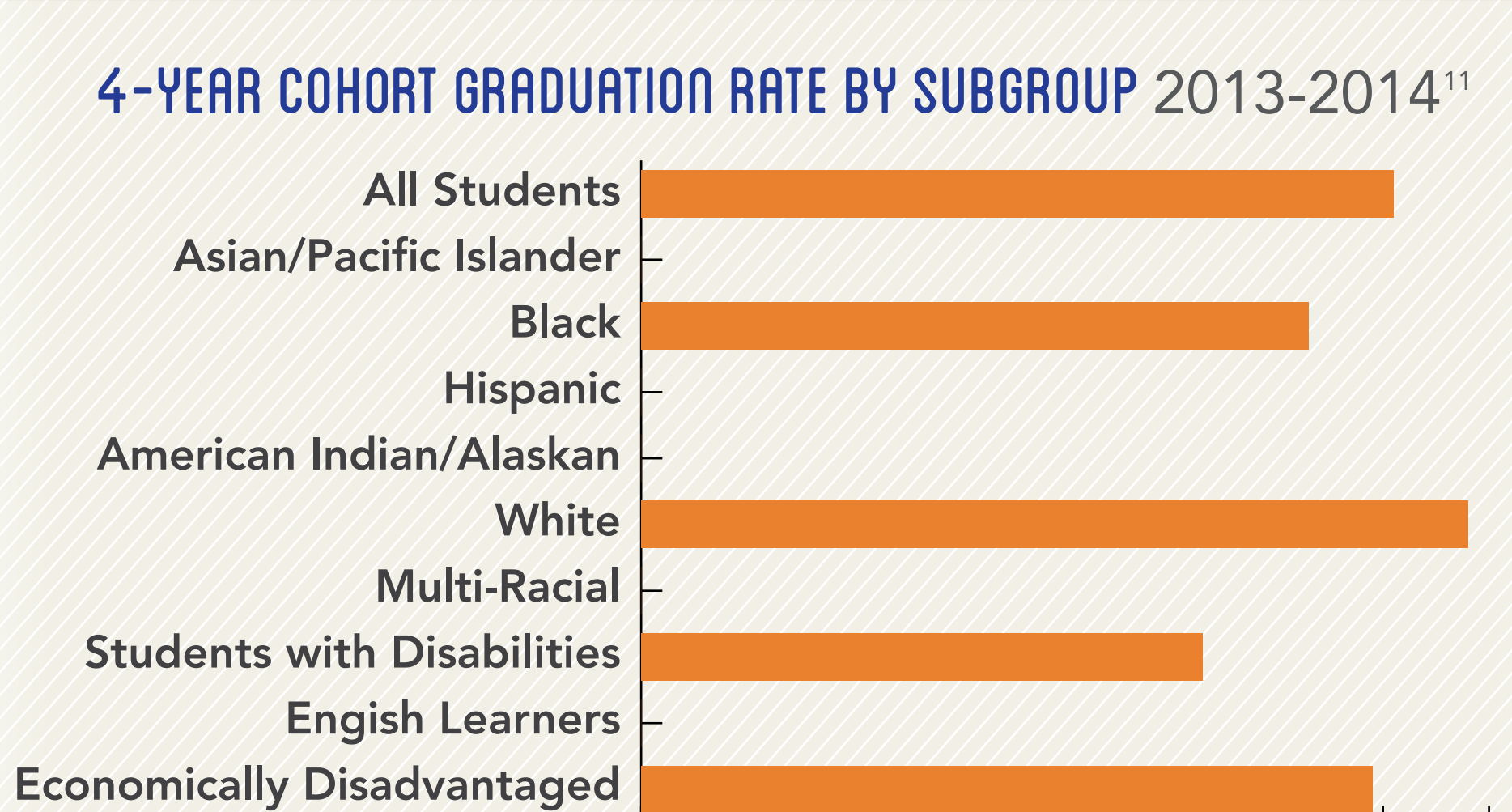
SAT AVERAGE SCORES (2012-2013)

Reading 469
Math 490

ACT AVERAGE SCORES (2013-2014)

English 17.9
Math 17.5
Science 18.5

4-YEAR COHORT GRADUATION RATE BY SUBGROUP 2013-2014¹¹



Sources: ¹American Community Survey 5-year estimates, 2009-2013; ²Georgia Family Connection Partnership KIDS COUNT, 2012; ³Georgia Department of Juvenile Justice, 2015; ⁴State Child Welfare System of Georgia, 2014; ⁵Georgia Department of Education, 2013-2014; ⁶Governor's Office of Student Achievement Georgia State Report Card, 2013-2014; ⁷Office of Adult Education GED Testing Program, 2013-2014; ⁸Georgia Coalition of Refugee Stakeholders, 2013-2014; ⁹Technical College System of Georgia, 2013-2014; ¹⁰University System of Georgia, 2013-2014; ¹¹Georgia Department of Education - College and Career Ready Performance Index, 2013-2014; ¹²Georgia Student Finance Commission, 2013-2014