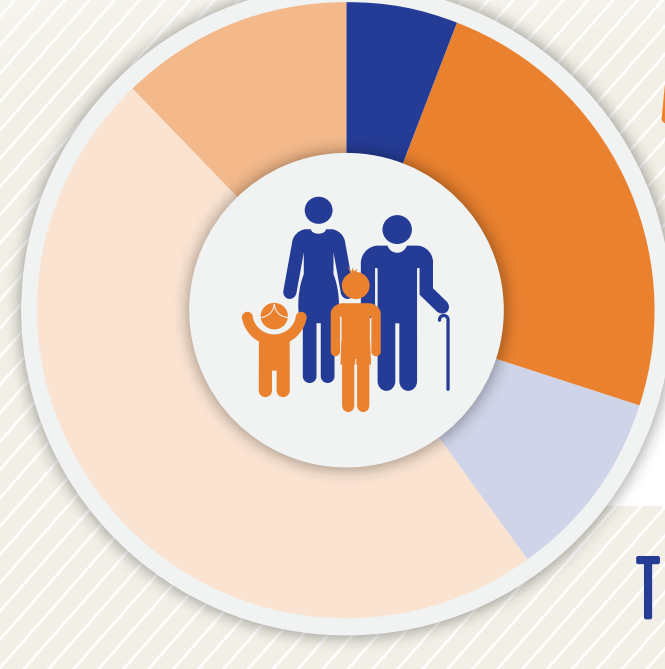




## EDUCATION & COMMUNITY PROFILE

### PEACH COUNTY



#### POPULATION BY AGE<sup>1</sup>

2013-2014

- 6% Under Age 5
- 10% Age 20-24
- 12% Age 65 & Above
- 24% Age 5-19
- 48% Age 25-64

TOTAL POPULATION: 27,481

#### VULNERABLE POPULATIONS<sup>1-8</sup>



CHILDREN IN POVERTY UNDER 18 - 2013  
38%



TEENS 16-19 NOT WORKING OR NOT IN SCHOOL - 2013  
3%



TEEN PREGNANCIES PER THOUSAND - 2012  
29



COMMUNITY JUVENILE JUSTICE CASES - 2015  
17



FOSTER YOUTH - 2014  
59



HOMELESS STUDENTS 2013 - 2014



MIGRANT STUDENTS 2013 - 2014

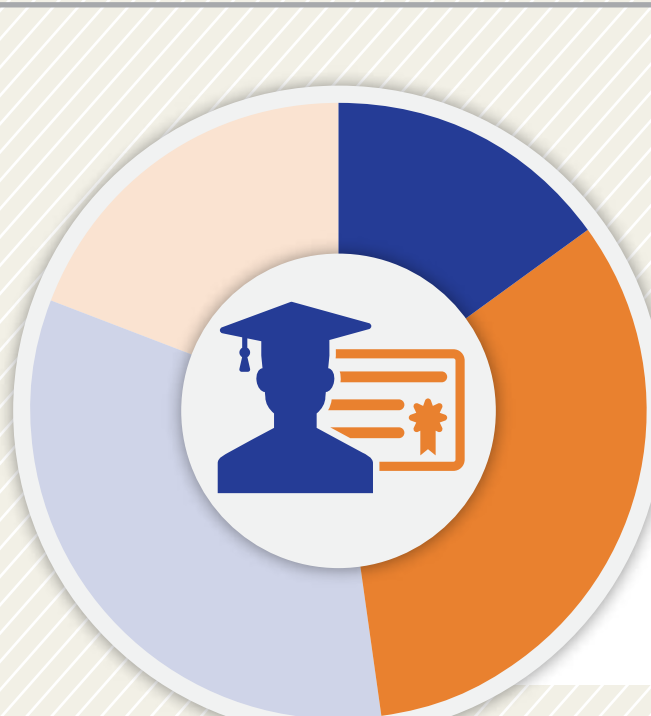
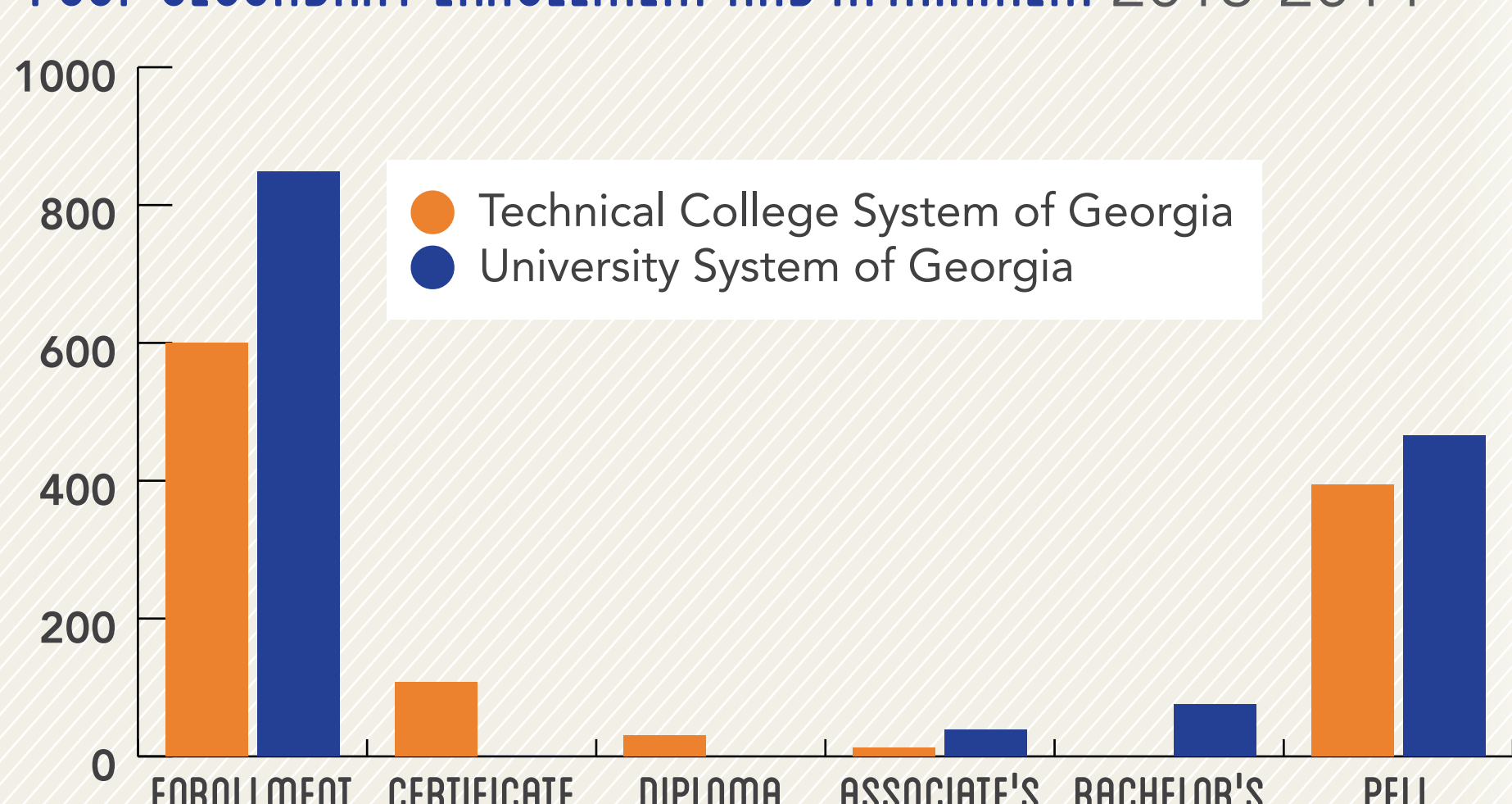


GED RECIPIENTS 2013 - 2014  
42



REFUGEE ARRIVALS - 2014  
0

#### POST-SECONDARY ENROLLMENT AND ATTAINMENT 2013-2014<sup>9</sup>



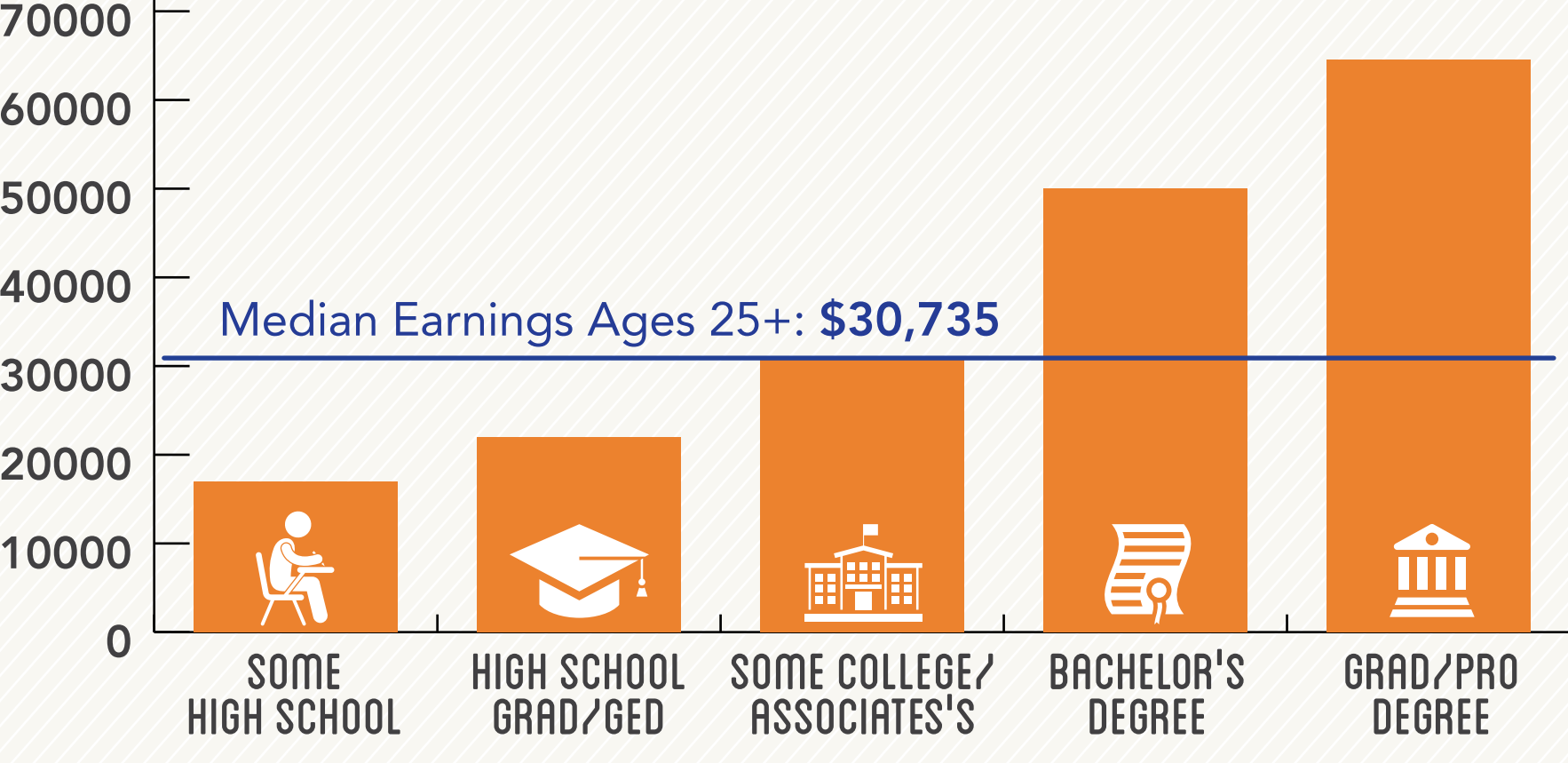
#### DEGREE ATTAINMENT<sup>1</sup>

Among Adults, 25-64, 2013-14

- 15% Some High School
- 33% High School Grad/GED
- 33% Some College/Associate's
- 19% Bachelor's Degree +

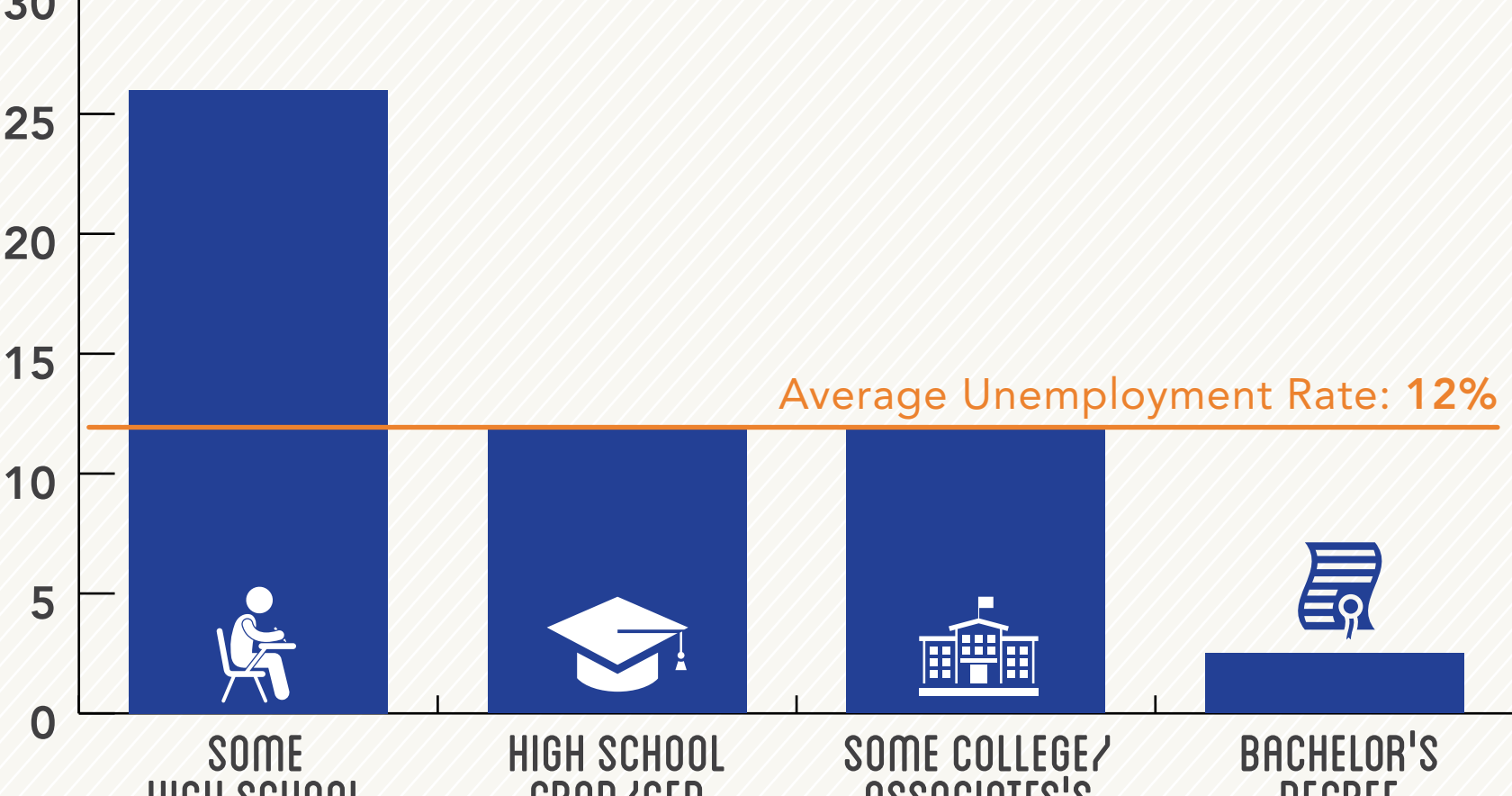
#### MEDIAN EARNINGS BY DEGREE ATTAINMENT<sup>1</sup>

Among Adults Ages 25-64, 2009-13



#### UNEMPLOYMENT BY DEGREE ATTAINMENT<sup>1</sup>

Among Adults Ages 25-64, 2009-13



#### STUDENTS ENROLLED<sup>6</sup>

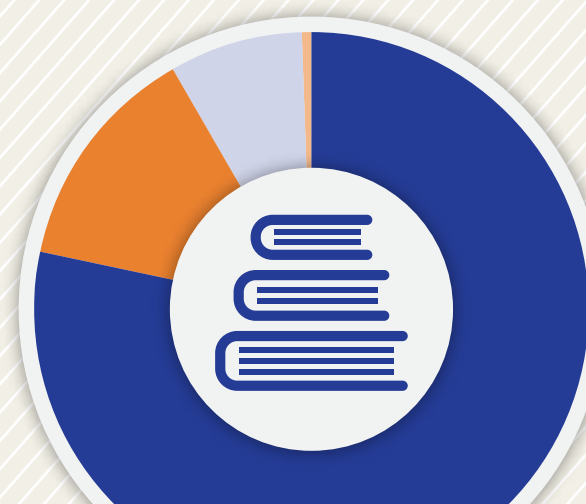
by school level 2013-14



- Elementary (PK-5) 1,773
- Middle (6-8) 946
- High School 1,011
- Total: 3,730

#### STUDENTS ENROLLED<sup>6</sup>

by subgroup 2013-14



- Economically Disadvantaged 2,611
- Students with Disabilities 436
- English Learners 261
- Migrant 0
- Homeless 15

#### STUDENTS ENROLLED<sup>6</sup>

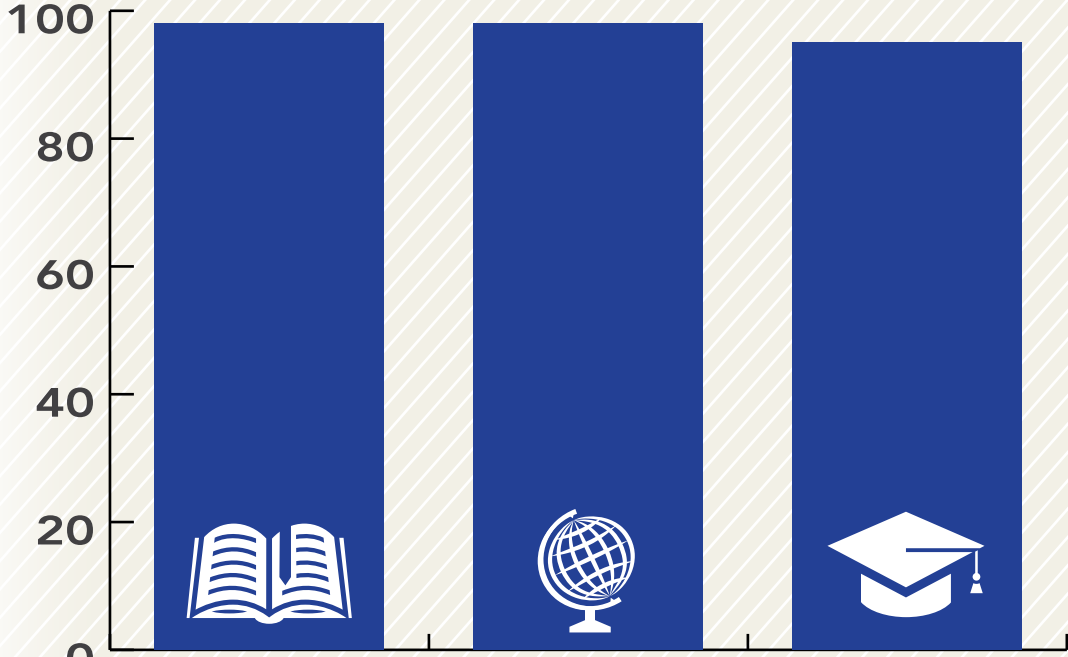
by race/ethnicity 2013-14



- White 1,231
- Black 1,865
- Hispanic 522
- Asian 37
- Multi-Racial 112

#### PERCENTAGE OF SCHOOL DAYS ATTENDED<sup>11</sup>

2013-14



#### POST-SECONDARY INDICATORS<sup>6</sup>

68% of high school grads enrolled in a U.S. institution within 16 months of high school graduation (2012)

43% of high school grads enrolled in Georgia post-secondary institution with one year of credit within two years of enrollment (2010)

#### POST-SECONDARY READINESS<sup>6, 11, 12</sup>

- 55% Enrolled in accelerated courses (2014)
- 56% Academically prepared for post-secondary (2014)
- 61% Completed FAFSA (2013-2014)
- 46% Eligible for HOPE scholarship (2013-2014)

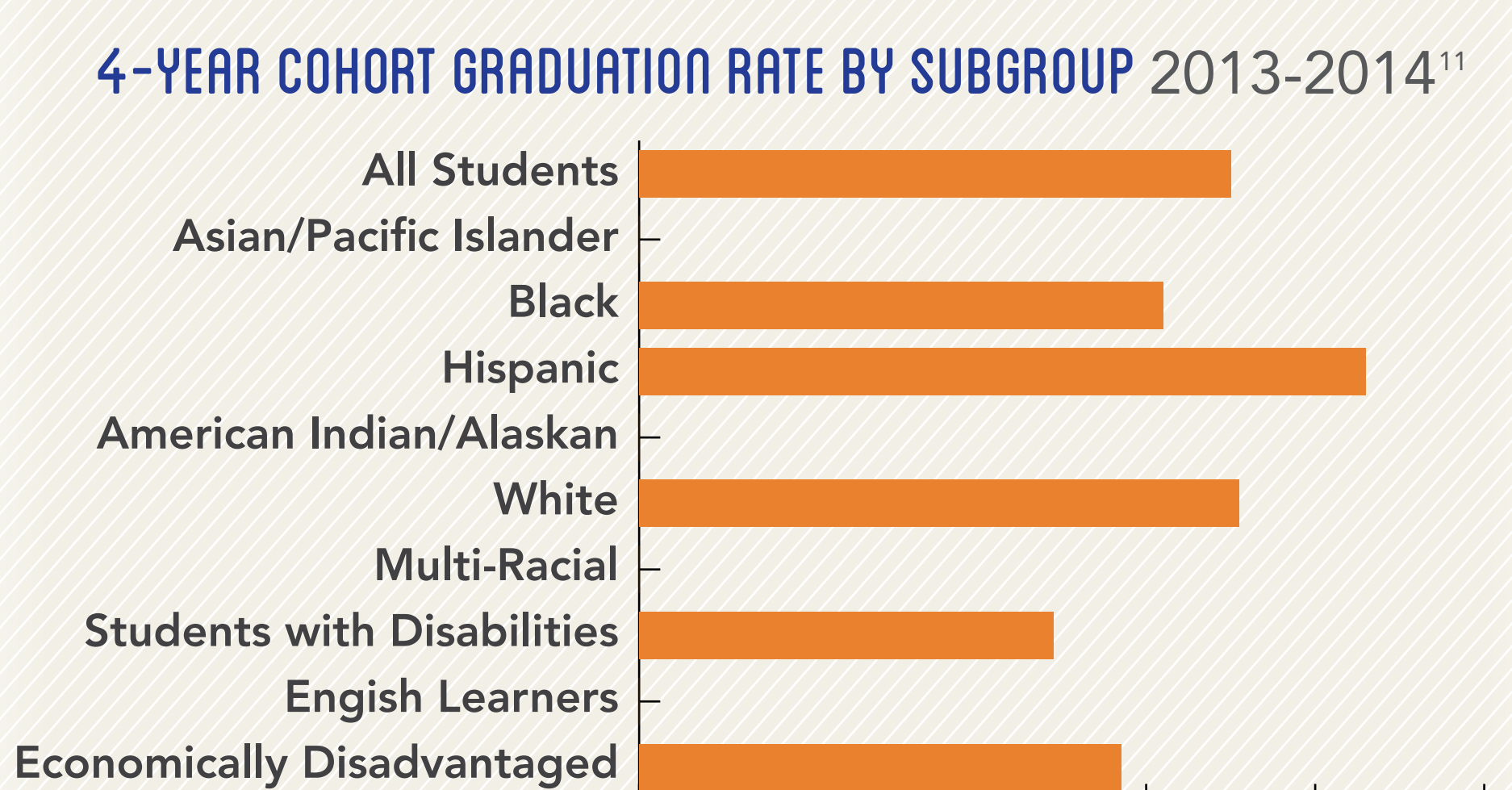
#### SAT AVERAGE SCORES (2012-2013)

Reading 463  
Math 471

#### ACT AVERAGE SCORES (2013-2014)

English 15.9  
Math 16.4  
Science 17.2

#### 4-YEAR COHORT GRADUATION RATE BY SUBGROUP 2013-2014<sup>11</sup>



Sources: <sup>1</sup>American Community Survey 5-year estimates, 2009-2013; <sup>2</sup>Georgia Family Connection Partnership KIDS COUNT, 2012; <sup>3</sup>Georgia Department of Juvenile Justice, 2015; <sup>4</sup>State Child Welfare System of Georgia, 2014; <sup>5</sup>Georgia Department of Education, 2013-2014; <sup>6</sup>Governor's Office of Student Achievement Georgia State Report Card, 2013-2014; <sup>7</sup>Office of Adult Education GED Testing Program, 2013-2014; <sup>8</sup>Georgia Coalition of Refugee Stakeholders, 2013-2014; <sup>9</sup>Technical College System of Georgia, 2013-2014; <sup>10</sup>University System of Georgia, 2013-2014; <sup>11</sup>Georgia Department of Education - College and Career Ready Performance Index, 2013-2014; <sup>12</sup>Georgia Student Finance Commission, 2013-2014