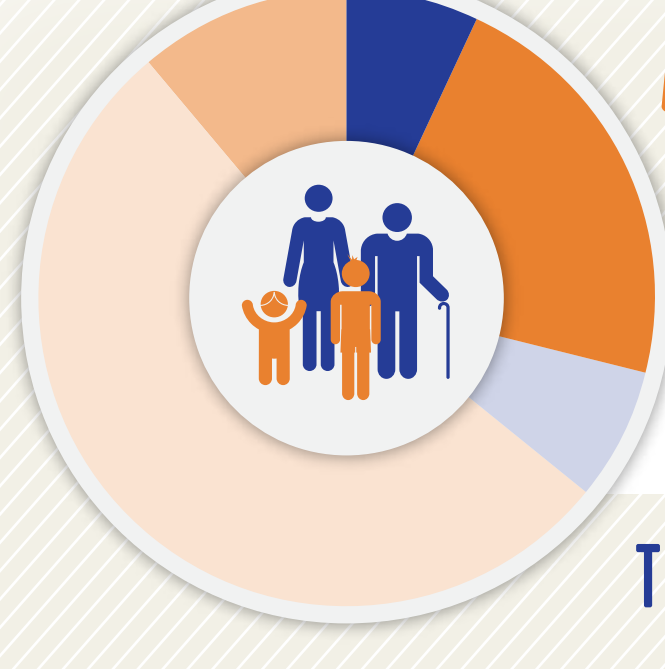




EDUCATION & COMMUNITY PROFILE

MUSCOGEE COUNTY



POPULATION BY AGE¹

2013-2014

- 8% Under Age 5
- 8% Age 20-24
- 12% Age 65 & Above
- 22% Age 5-19
- 51% Age 25-64

TOTAL POPULATION: 194,949

VULNERABLE POPULATIONS¹⁻⁸



CHILDREN IN POVERTY UNDER 18 - 2013
28%



TEENS 16-19 NOT WORKING OR NOT IN SCHOOL - 2013
9%



TEEN PREGNANCIES PER THOUSAND - 2012
32.1



COMMUNITY JUVENILE JUSTICE CASES - 2015
446



FOSTER YOUTH - 2014
345



HOMELESS STUDENTS 2013 - 2014



MIGRANT STUDENTS 2013 - 2014

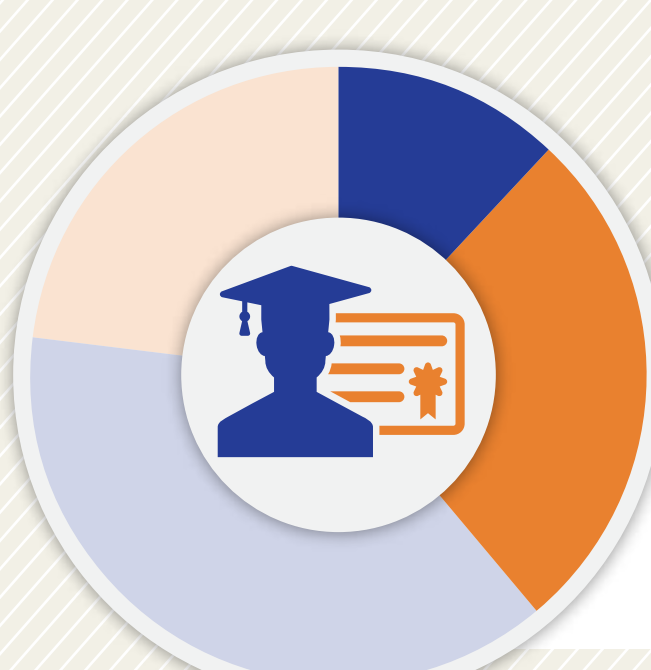
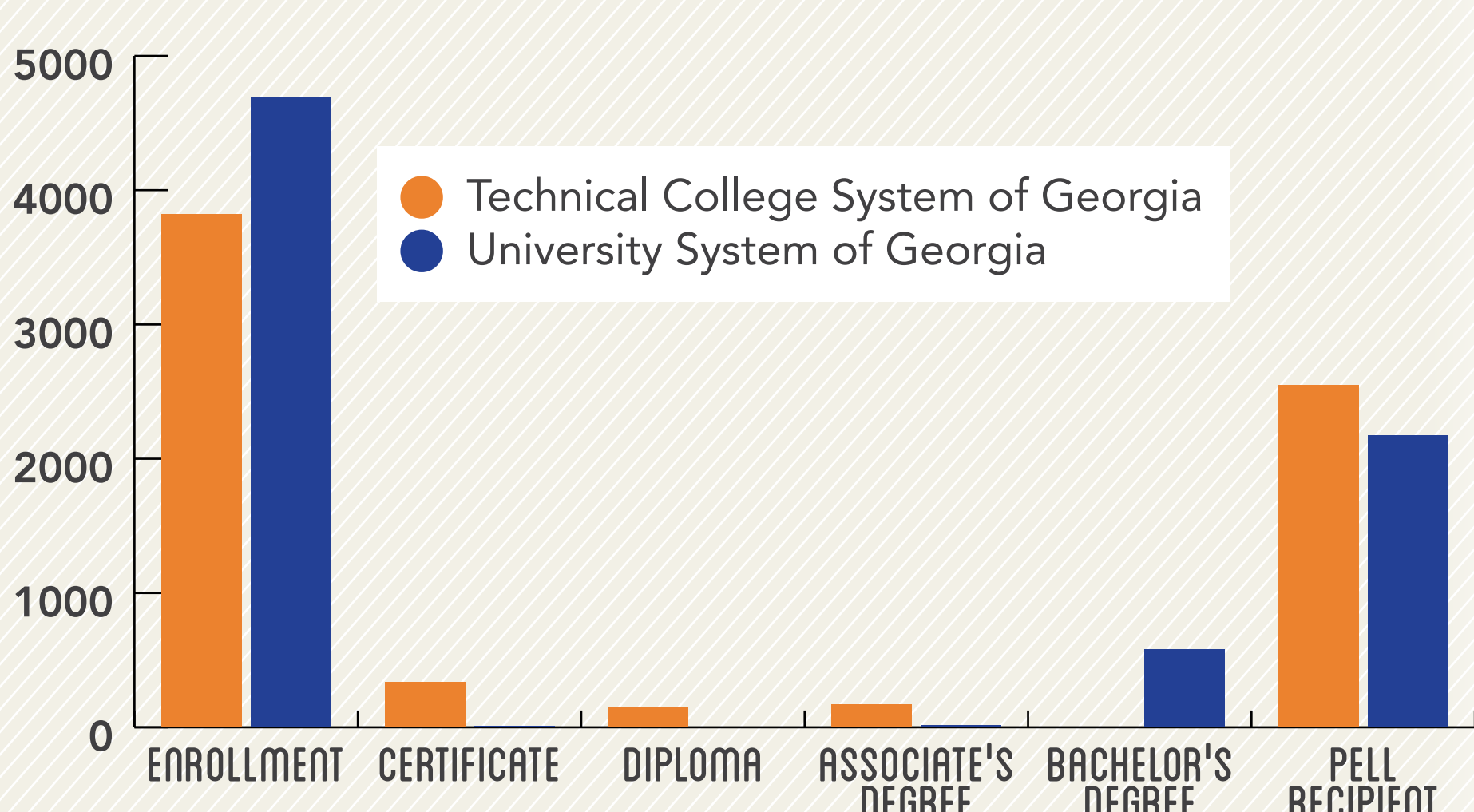


GED RECIPIENTS 2013 - 2014
267



REFUGEE ARRIVALS - 2014
0

POST-SECONDARY ENROLLMENT AND ATTAINMENT 2013-2014⁹



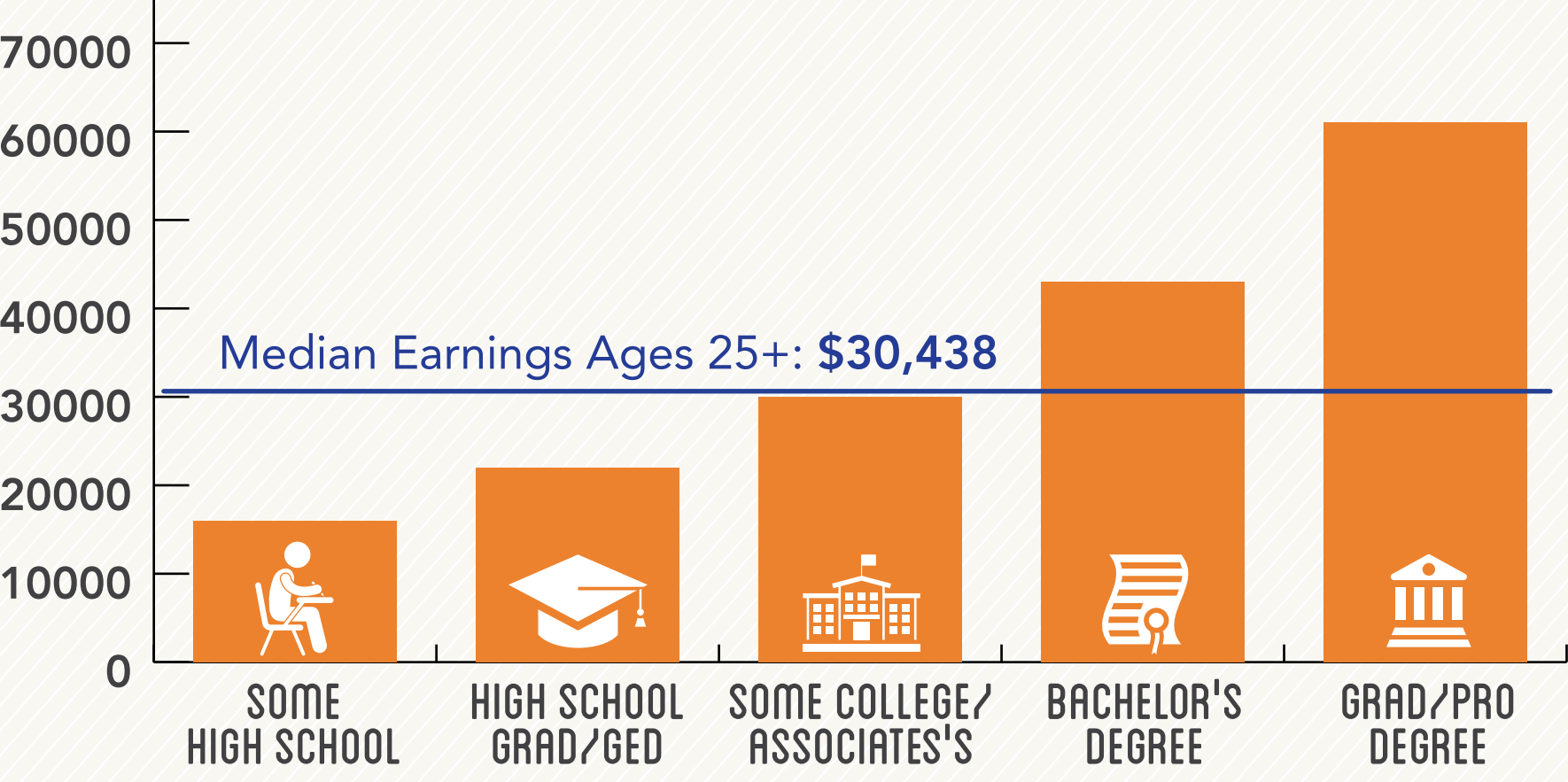
DEGREE ATTAINMENT¹

Among Adults, 25-64, 2013-14

- 12% Some High School
- 27% High School Grad/GED
- 38% Some College/Associate's
- 23% Bachelor's Degree +

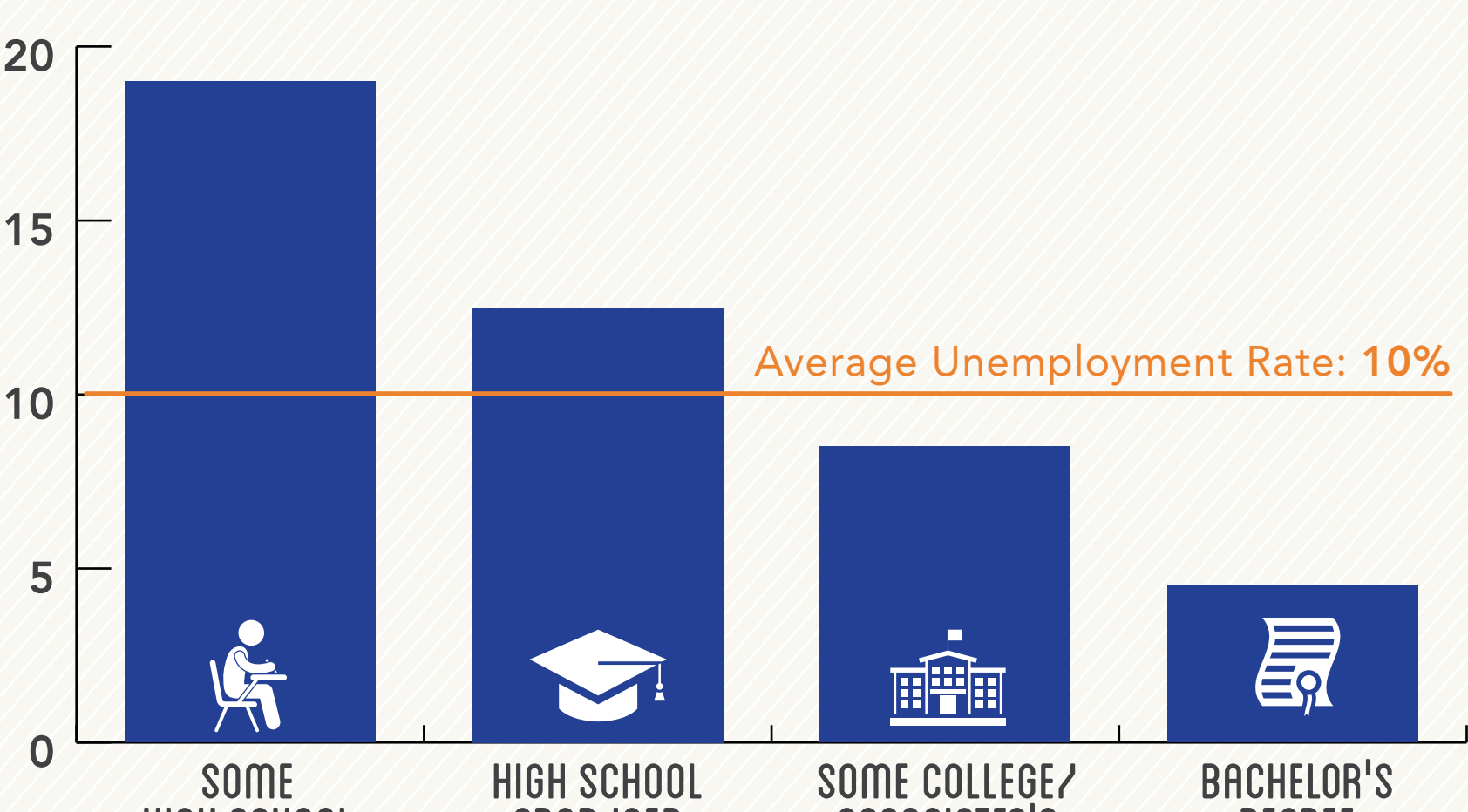
MEDIAN EARNINGS BY DEGREE ATTAINMENT¹

Among Adults Ages 25-64, 2009-13



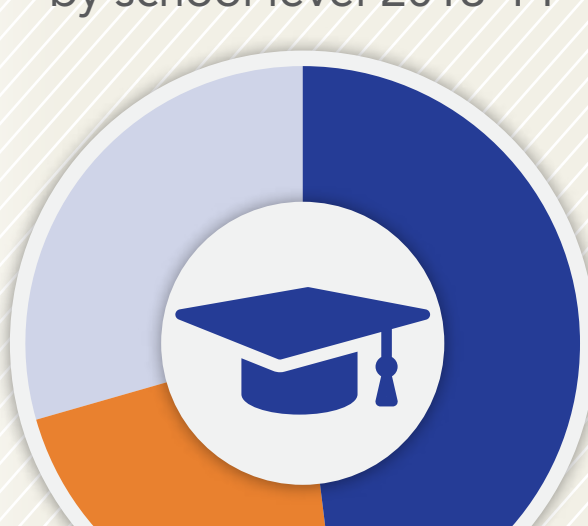
UNEMPLOYMENT BY DEGREE ATTAINMENT¹

Among Adults Ages 25-64, 2009-13



STUDENTS ENROLLED⁶

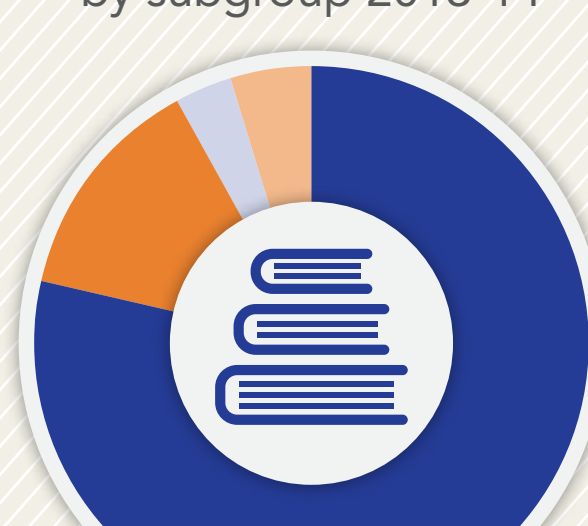
by school level 2013-14



- Elementary (PK-5) **14,951**
- Middle (6-8) **7,005**
- High School **9,081**
- Total: 31,037**

STUDENTS ENROLLED⁶

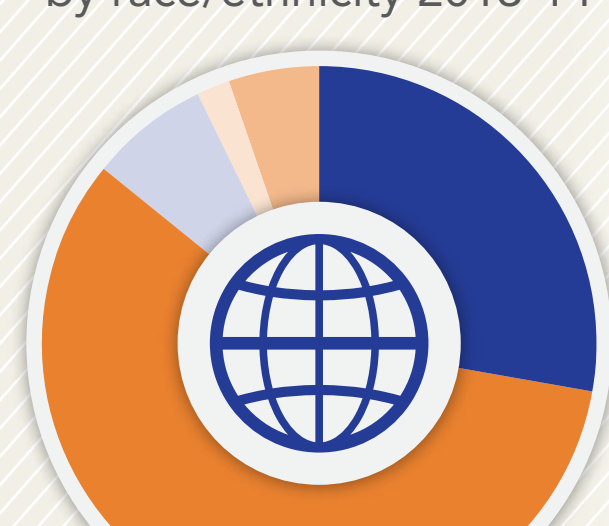
by subgroup 2013-14



- Economically Disadvantaged **22,347**
- Students with Disabilities **3,787**
- English Learners **931**
- Migrant **0**
- Homeless **1,333**

STUDENTS ENROLLED⁶

by race/ethnicity 2013-14



- White **8,690**
- Black **18,001**
- Hispanic **2,173**
- Asian **621**
- Multi-Racial **1,552**

PERCENTAGE OF SCHOOL DAYS ATTENDED¹¹

2013-14



POST-SECONDARY INDICATORS⁶

71% of high school grads enrolled in a U.S. institution within 16 months of high school graduation (2012)

58% of high school grads enrolled in Georgia post-secondary institution with one year of credit within two years of enrollment (2010)

POST-SECONDARY READINESS^{6, 11, 12}

- 64%** Enrolled in accelerated courses (2014)
- 74%** Academically prepared for post-secondary (2014)
- 71%** Completed FAFSA (2013-2014)
- 41%** Eligible for HOPE scholarship (2013-2014)

SAT AVERAGE SCORES (2012-2013)

Reading **469**

Math **463**

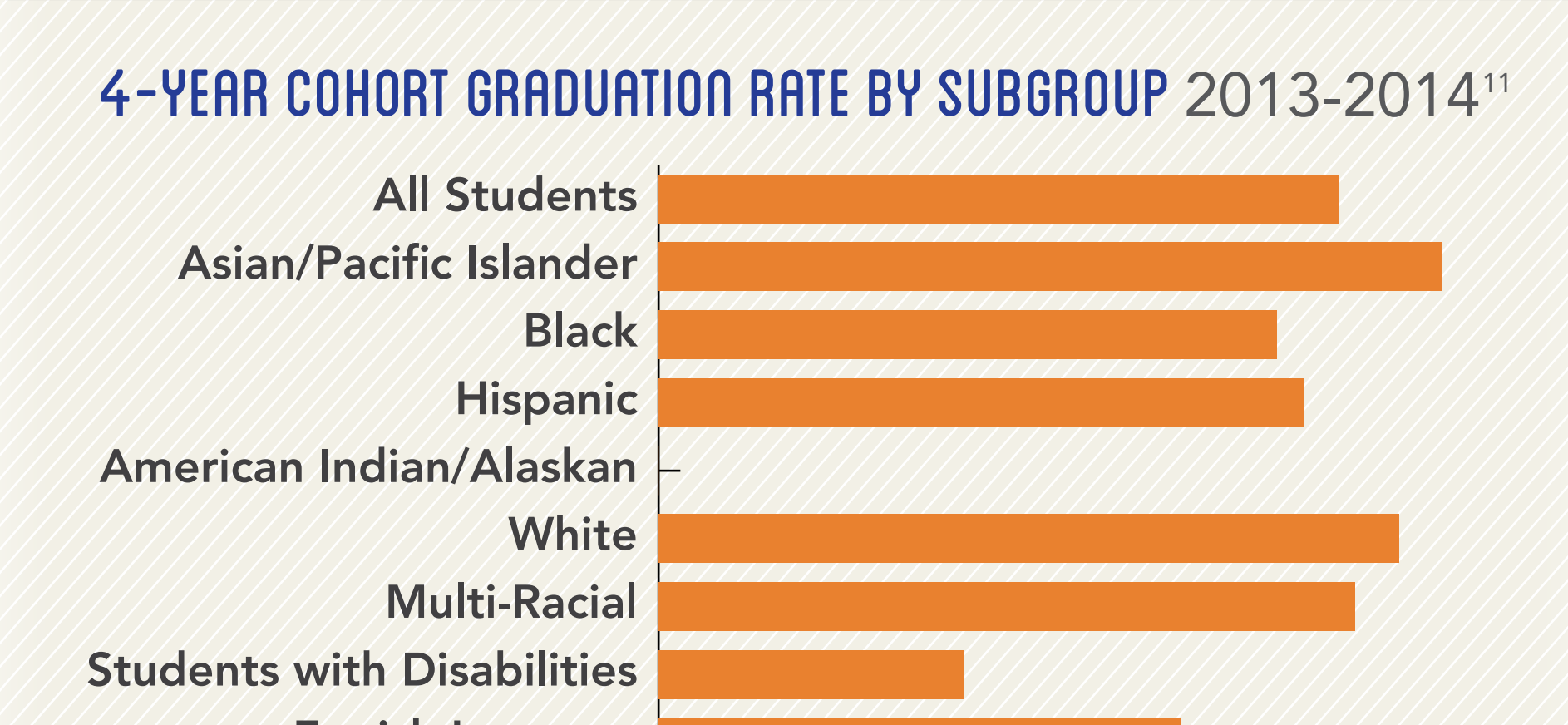
ACT AVERAGE SCORES (2013-2014)

English **17.3**

Math **18.1**

Science **17.9**

4-YEAR COHORT GRADUATION RATE BY SUBGROUP 2013-2014¹¹



Sources: ¹American Community Survey 5-year estimates, 2009-2013; ²Georgia Family Connection Partnership KIDS COUNT, 2012; ³Georgia Department of Juvenile Justice, 2015; ⁴State Child Welfare System of Georgia, 2014; ⁵Georgia Department of Education, 2013-2014; ⁶Governor's Office of Student Achievement Georgia State Report Card, 2013-2014; ⁷Office of Adult Education GED Testing Program, 2013-2014; ⁸Georgia Coalition of Refugee Stakeholders, 2013-2014; ⁹Technical College System of Georgia, 2013-2014; ¹⁰University System of Georgia, 2013-2014; ¹¹Georgia Department of Education - College and Career Ready Performance Index, 2013-2014; ¹²Georgia Student Finance Commission, 2013-2014