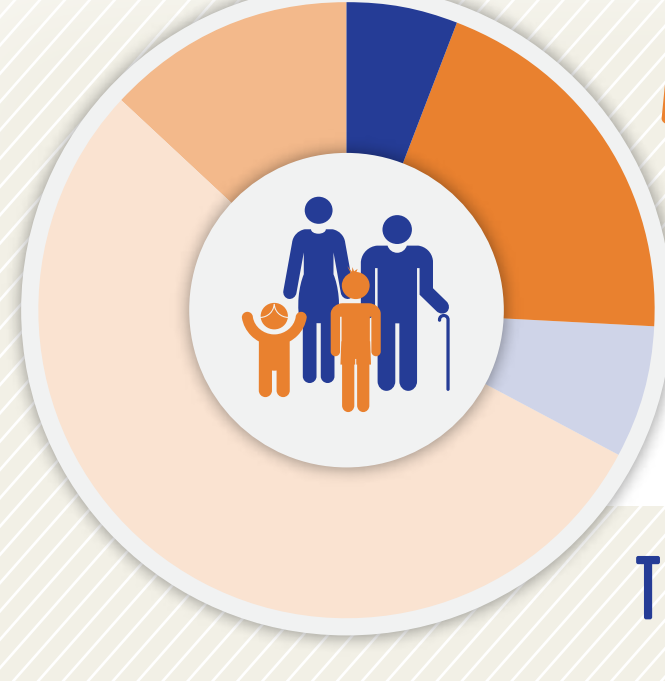




EDUCATION & COMMUNITY PROFILE

MACON COUNTY



POPULATION BY AGE¹

2013-2014

- 6% Under Age 5
- 7% Age 20-24
- 13% Age 65 & Above
- 20% Age 5-19
- 54% Age 25-64

TOTAL POPULATION: 14,455

VULNERABLE POPULATIONS¹⁻⁸



CHILDREN IN POVERTY UNDER 18 - 2013
43%



TEENS 16-19 NOT WORKING OR NOT IN SCHOOL - 2013
24%



TEEN PREGNANCIES PER THOUSAND - 2012
35.3



COMMUNITY JUVENILE JUSTICE CASES - 2015
19



FOSTER YOUTH - 2014
<10



HOMELESS STUDENTS 2013 - 2014



MIGRANT STUDENTS 2013 - 2014

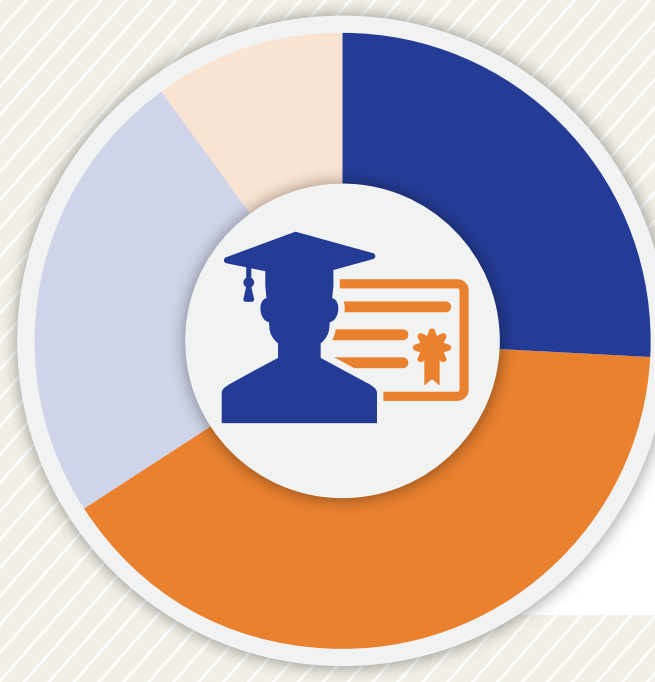
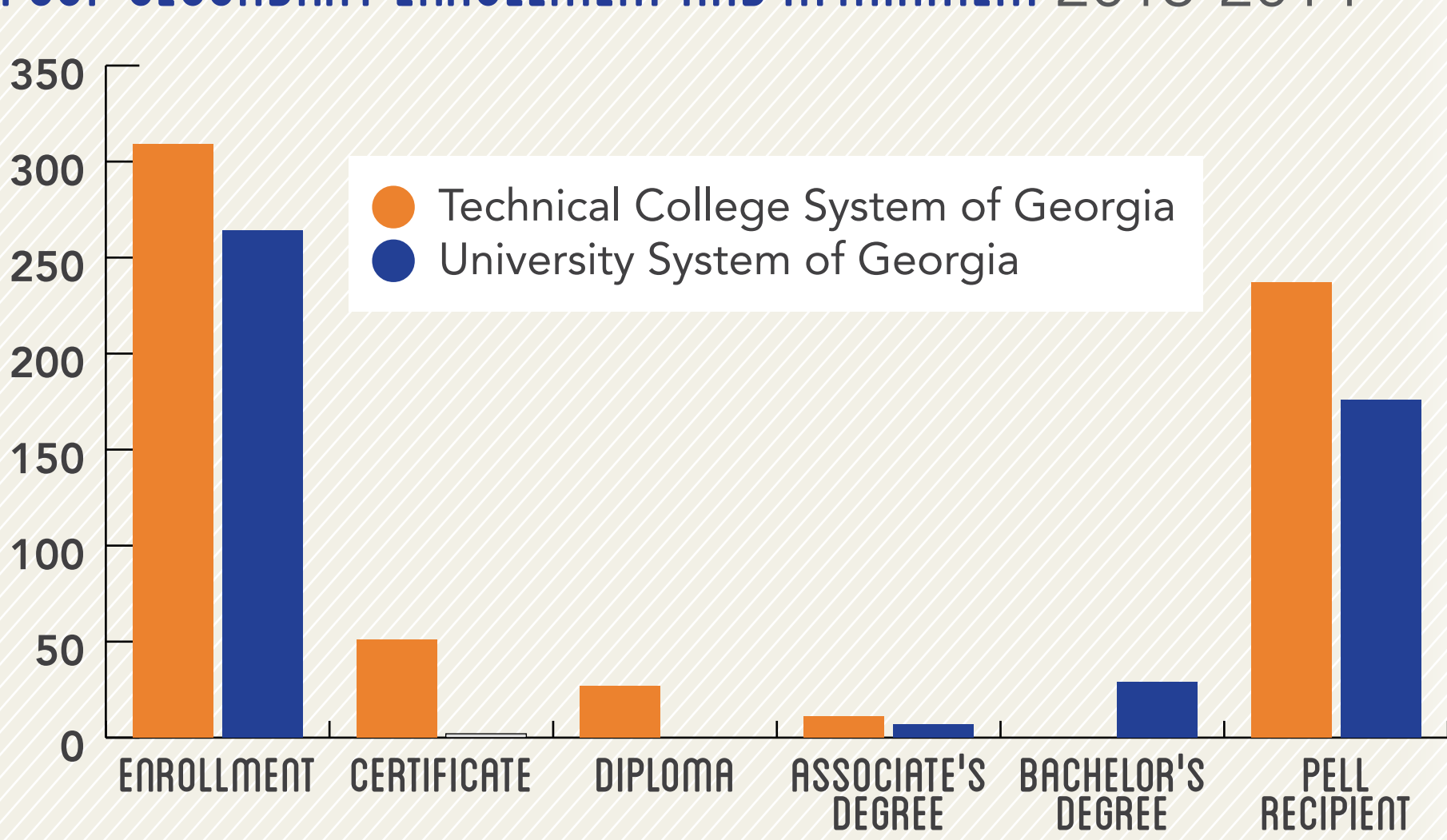


GED RECIPIENTS 2013 - 2014
79



REFUGEE ARRIVALS - 2014
0

POST-SECONDARY ENROLLMENT AND ATTAINMENT 2013-2014⁹



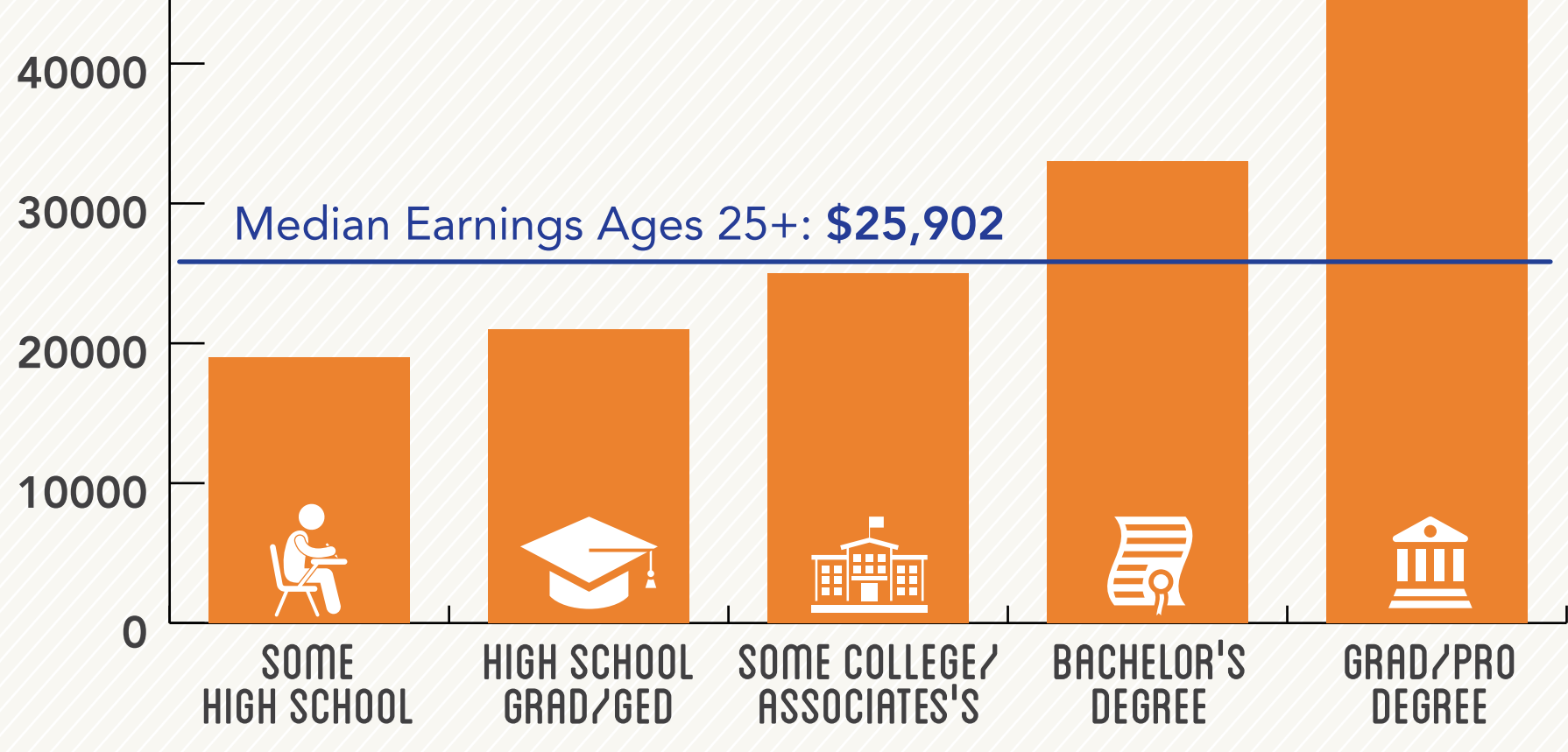
DEGREE ATTAINMENT¹

Among Adults, 25-64, 2013-14

- 26% Some High School
- 40% High School Grad/GED
- 24% Some College/Associate's
- 10% Bachelor's Degree +

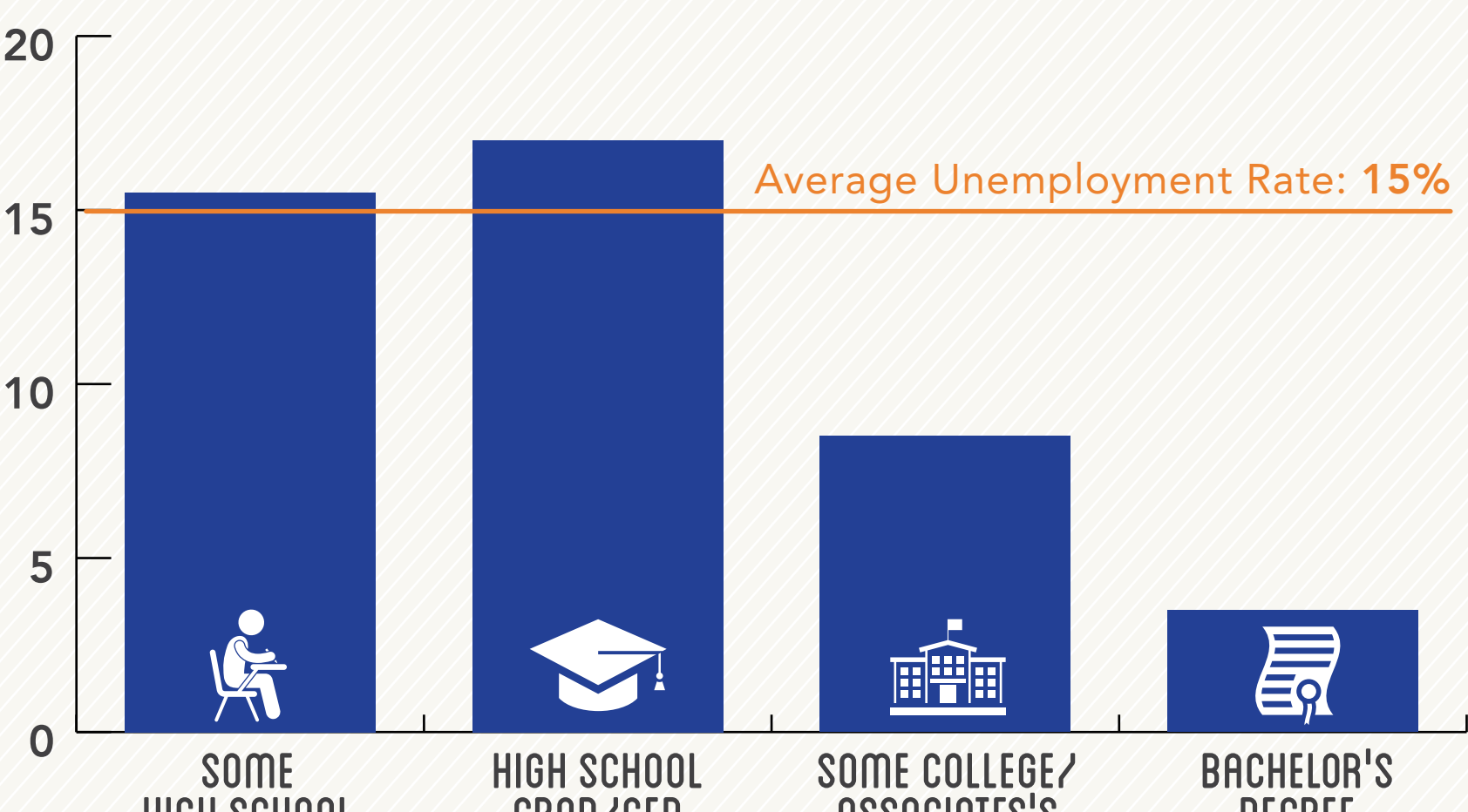
MEDIAN EARNINGS BY DEGREE ATTAINMENT¹

Among Adults Ages 25-64, 2009-13



UNEMPLOYMENT BY DEGREE ATTAINMENT¹

Among Adults Ages 25-64, 2009-13



STUDENTS ENROLLED⁶

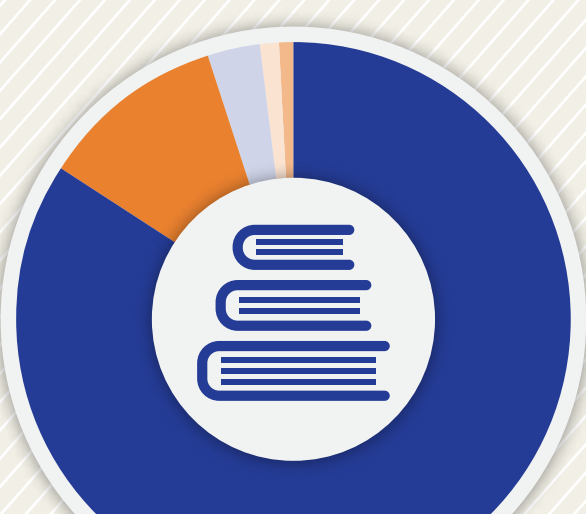
by school level 2013-14



- Elementary (PK-5) **647**
- Middle (6-8) **411**
- High School **533**
- Total: 1,591**

STUDENTS ENROLLED⁶

by subgroup 2013-14



- Economically Disadvantaged **1,305**
- Students with Disabilities **170**
- English Learners **48**
- Migrant **16**
- Homeless **11**

STUDENTS ENROLLED⁶

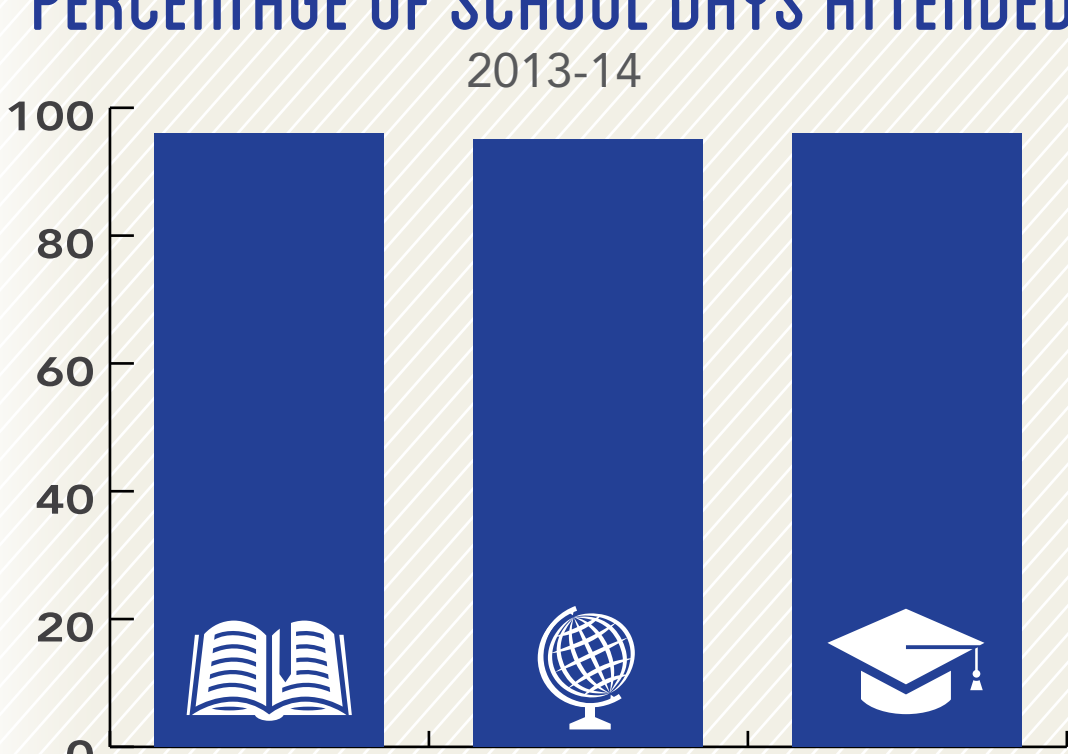
by race/ethnicity 2013-14



- White **127**
- Black **1,305**
- Hispanic **111**
- Asian **16**
- Multi-Racial **16**

PERCENTAGE OF SCHOOL DAYS ATTENDED¹¹

2013-14



POST-SECONDARY INDICATORS⁶

71% of high school grads enrolled in a U.S. institution within 16 months of high school graduation (2012)

47% of high school grads enrolled in Georgia post-secondary institution with one year of credit within two years of enrollment (2010)

POST-SECONDARY READINESS^{6, 11, 12}

- 32%** Enrolled in accelerated courses (2014)
- 71%** Academically prepared for post-secondary (2014)
- 72%** Completed FAFSA (2013-2014)
- 21%** Eligible for HOPE scholarship (2013-2014)

SAT AVERAGE SCORES (2012-2013)

Reading **376**

Math **408**

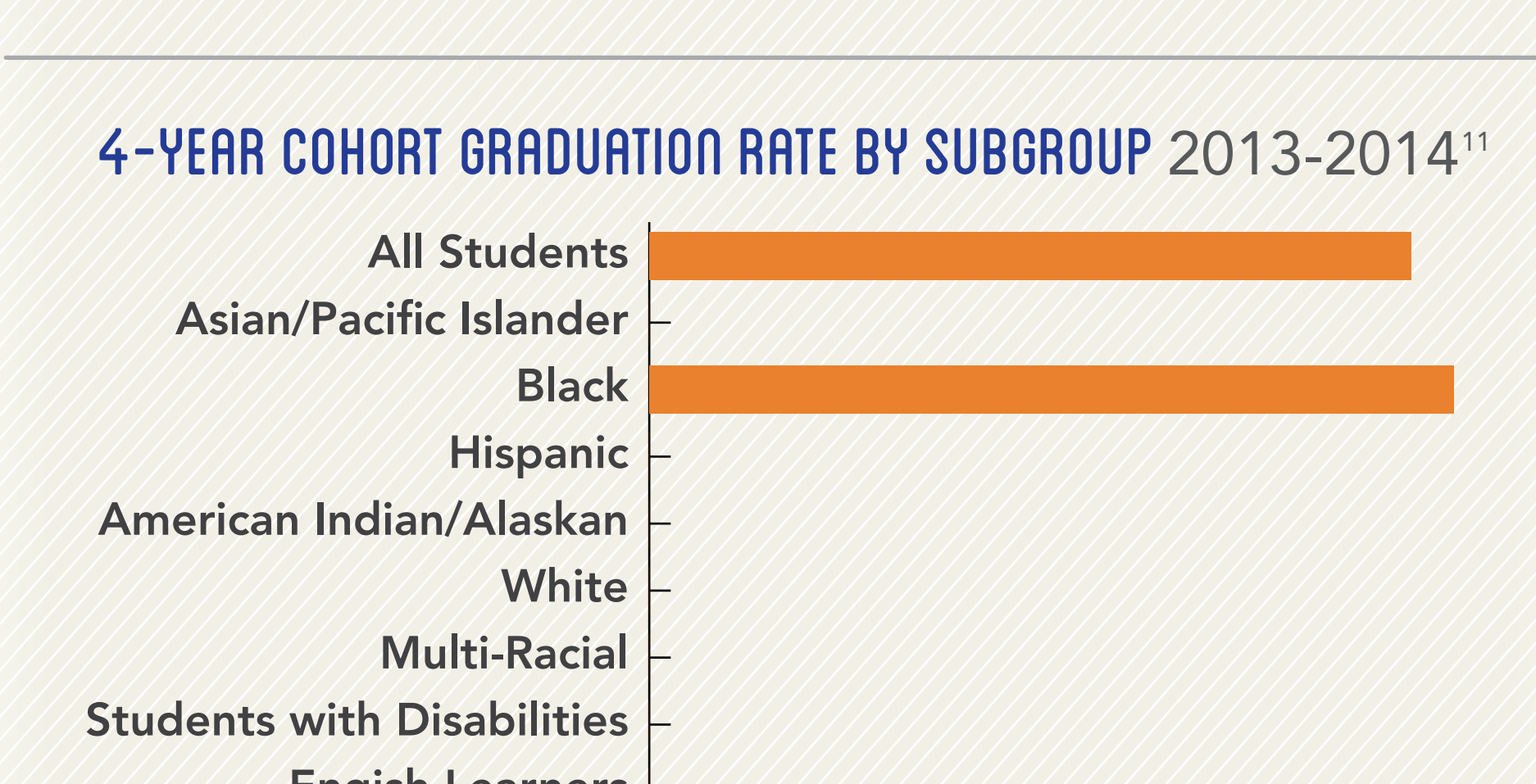
ACT AVERAGE SCORES (2013-2014)

English **16.5**

Math **17.8**

Science **17.5**

4-YEAR COHORT GRADUATION RATE BY SUBGROUP 2013-2014¹¹



Sources: ¹American Community Survey 5-year estimates, 2009-2013; ²Georgia Family Connection Partnership KIDS COUNT, 2012; ³Georgia Department of Juvenile Justice, 2015; ⁴State Child Welfare System of Georgia, 2014; ⁵Georgia Department of Education, 2013-2014; ⁶Governor's Office of Student Achievement Georgia State Report Card, 2013-2014; ⁷Office of Adult Education GED Testing Program, 2013-2014; ⁸Georgia Coalition of Refugee Stakeholders, 2013-2014; ⁹Technical College System of Georgia, 2013-2014; ¹⁰University System of Georgia, 2013-2014; ¹¹Georgia Department of Education - College and Career Ready Performance Index, 2013-2014; ¹²Georgia Student Finance Commission, 2013-2014